

SKILL LEVEL

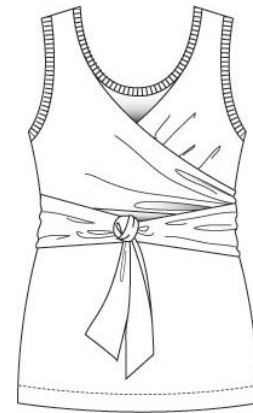
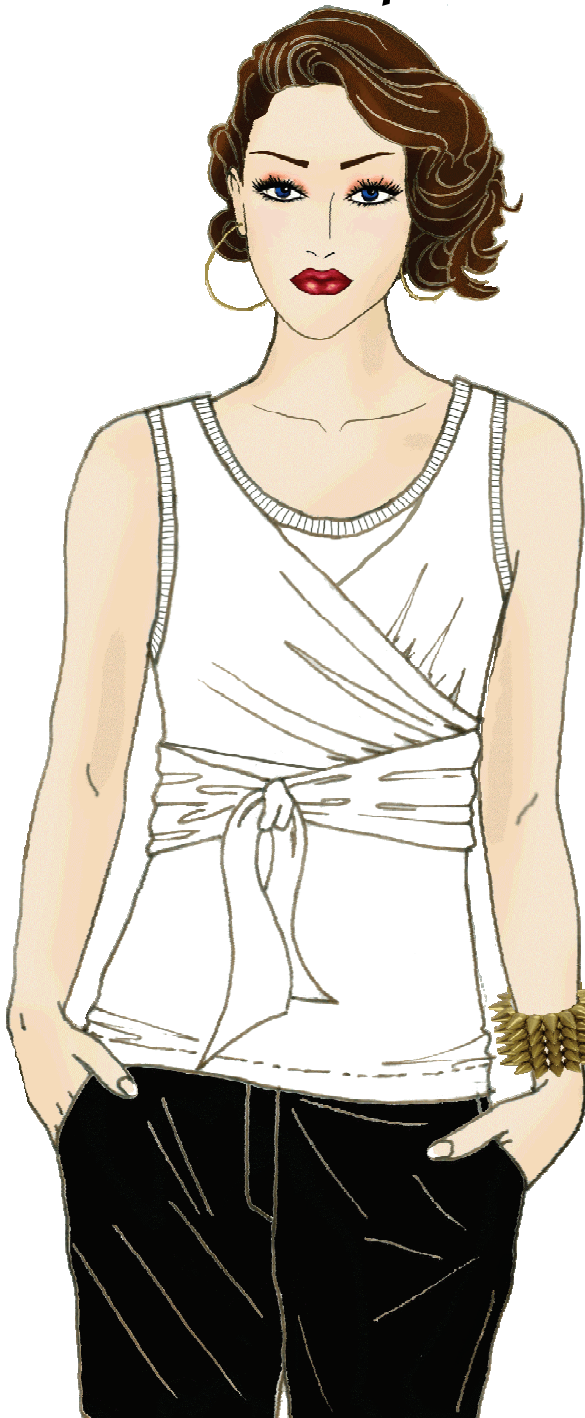


BEGINNER

multisized
pattern...sizes
6/8/10/12/14/16
/18/20/22/24/26
all together!

*www.hotpatterns.com*tm
patterns so hot they're smokin'...

HotPatterns & fabric.com exclusive download
All Wrapped Up Tank



This chic little Tank is the perfect year-round layering piece, designed for fluid knits with a little stretch...try silk, bamboo, cotton modal, tencel, viscose or rayon jersey, or even a lightweight sweater knit.

Semi-fitted, pull-over Tank has narrow knit rib or self fabric trim at neckline and armholes. Tank features scoop front neckline & a racer back, with a wrapover pieced tie to cinch the waist. This great basic finishes at the hip with a deep stitched hem; finish the tie with a narrow hem, or leave it raw for an edgy look.

Wear this modern wardrobe essential under a chunky cardigan or fitted jacket during cooler months; try it with a cropped faux fur shrug for casual evenings ; or wear the Tank as-is to stay cool, chic and totally fabulous in the hottest weather.

exclusive free download all wrapped up tank instructions page 1 of 2

SEAM ALLOWANCES & OTHER INFO

Seam allowances are 3/8" wide; all seams are sewn right sides together unless otherwise stated.

Skills needed include: sewing with knits (it's easy!); applying a neckband & knit armholes; working a deep hem; working a narrow hem OR a raw edge.

Depending on the recovery of your fabric or rib, you may have to shorten the neck and/or armhole bands... see our note in the circle below...

ABOUT THIS STYLE

This Tank has a close-fit with a wrap-around tie... you can have your tie at the front, back or sides.

Finish the tie with a narrow hem, or leave the edges raw.

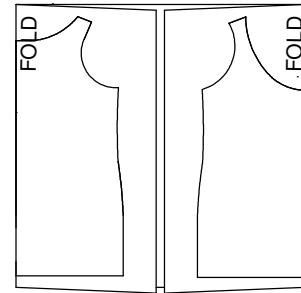
We usually recommend making a muslin before you cut your fabric; again, see our special note in the circle below ...you'll probably be better off just 'going for it' and adjusting as you go for this one!

FABRIC REQUIRED

All sizes need around 2 yards/185 cm of 60"/150cm wide fabric for the vest. You'll also need enough about 1/4 yard/22.5cm of rib trim.

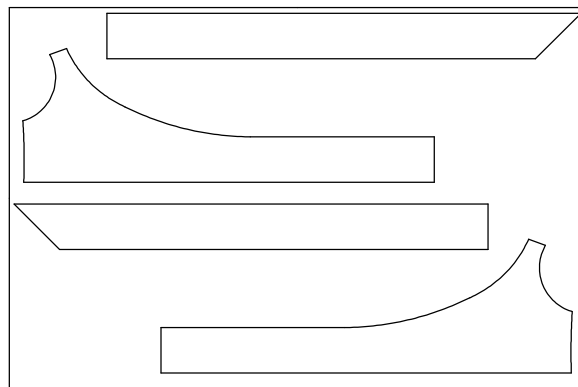
SUGGESTED FABRIC CUTTING LAYOUT FOR TANK

fold fabric selvage to the center for this layout



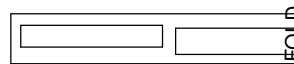
SUGGESTED FABRIC CUTTING LAYOUT FOR TANK WRAP & TIE

unfold fabric so it lays flat for this layout



SUGGESTED FABRIC CUTTING LAYOUT FOR NECK & ARMHOLE TRIM

fold fabric/ribbing in half from selvage to selvage for this layout



NARROW HEM Vs RAW EDGE FINISH

To finish the tie on this garment, you can EITHER work a narrow hem around these edges OR do a 'raw edge' finish.

For a narrow hemmed edge: sew a line of straight stitches along the edge of the fabric, about 1/4" or 0.65cm in from the cut edge.

Press the edges under along this line of stitching, then press this folded edge under 3/8" or 1cm. Hem along this double-folded edge. Press flat, and you're done!

For a raw edge finish: sew a line of straight stitches along the edge of the fabric, about 3/4" or 2cm in from the cut edge. Trim about 1/2" or 1.25cm from the edges...use pinking shears for a deconstructed look. Press flat, and you're done!

PLEASE NOTE

All knits are not created equal! This means that you may get to steps 4 & 5, and find that your rib is too long (or rather, has too much stretch) in which case, just shorten it to your taste...sorry, no magic formulas here, it's entirely up to you!

Oh yes...when we refer to 'rib', we mean EITHER the self fabric you are using to finish the neck & cuffs, OR a separate rib fabric...same result.

2

Hot Patterns & fabric.com

exclusive free download
all wrapped up tank
neckline edging
cut 1 pair in fabric or ribbing

FOLD

STRETCH DIREC

SIZE 26 CUT HERE
SIZE 24 CUT HERE
SIZE 22 CUT HERE
SIZE 20 CUT HERE
SIZE 18 CUT HERE
SIZE 16 CUT HERE
SIZE 14 CUT HERE
SIZE 12 CUT HERE
SIZE 10 CUT HERE
SIZE 8 CUT HERE
SIZE 6 CUT HERE

SIZE 26
 SIZE 24
 SIZE 22
 SIZE 20
 SIZE 18
 SIZE 16
 SIZE 14
 SIZE 12
 SIZE 10
 SIZE 8
 SIZE 6



Hot Pa

excl

al

CU

6

14

12

SIZE 10

SIZE 8

SIZE 6

1

SIZE 26 4

SIZE 24

SIZE 22

SIZE 20

SIZE 18

SIZE 1

SIZE

SIZE

SIZE

S

S



20

exclusive free download
all wrapped up tank
back
cut 1 on fold in fabric

FOLD

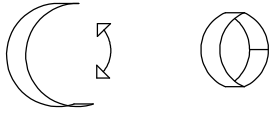
STRETCH DIRECTION

FOLDLINE FOR TANK HEM

instructions page 2 of 2

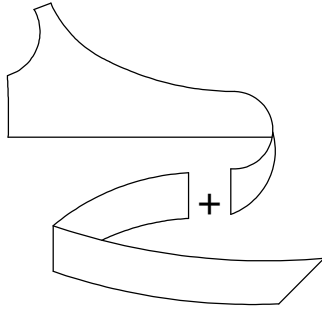
1

Join the 2 short ends of the armhole ribs to make a pair of loops;
join the 2 short ends of the neckline rib to create a loop.
Press the seam allowances open; fold the loops in half lengthways.



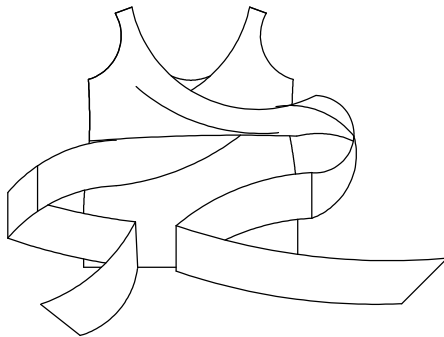
2a

Join the front ties to the tie pieces to create the wrapover/tie pieces...press all the seams open.



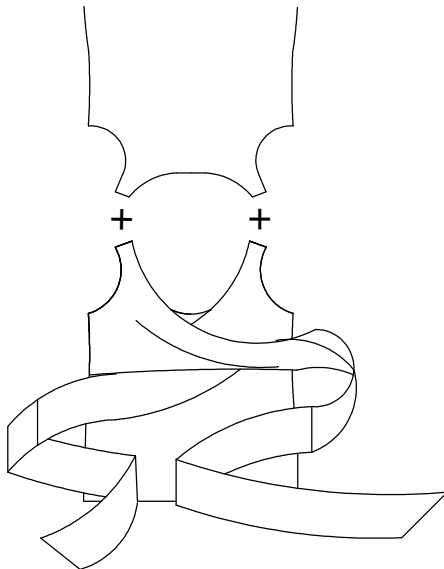
2b

Finish the wrapover/tie edges with a narrow hem or raw edge, then baste the wrapover/ties to the front shoulders, armholes and side seams.



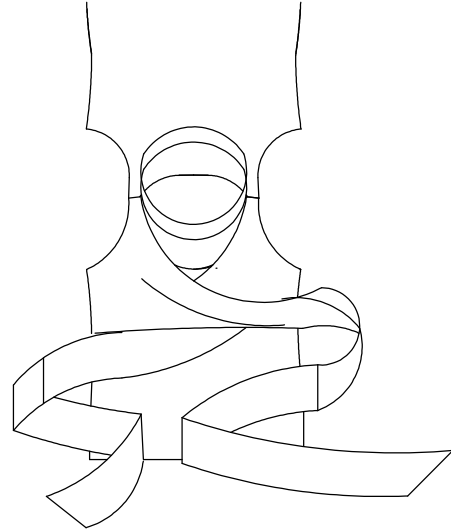
3

Join the front to the back at the shoulder seams.
Press the seam allowances open.



4

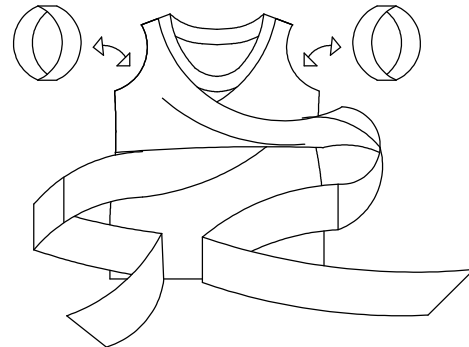
Matching the neck rib seam to the center back neck on the tank, and easing where necessary, join the neckline rib to the tank neckline.



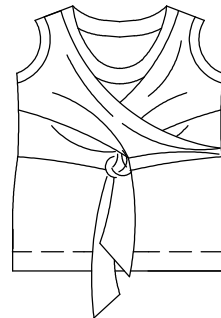
5

a) Join the front to the back along the side seams, from the bottom edge to the armhole.
Press the side seams open.

b) Matching the seam on the armhole rib to the side seams, and easing where necessary, join the armhole rib to the tank armhole.



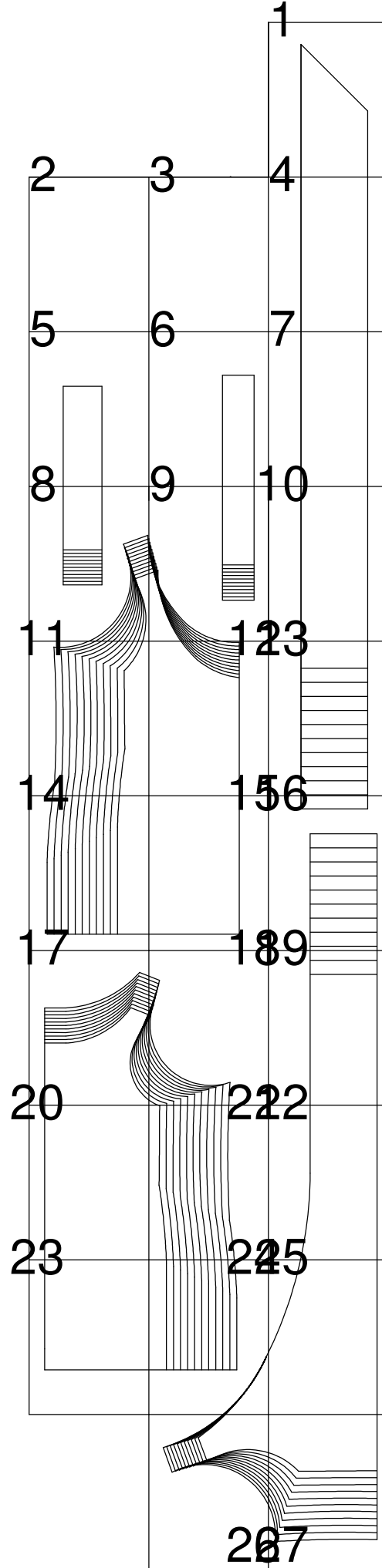
6



Hem the tank with a 1.5" or 3.75cm deep hem
(follow the dashed line marked on the pattern),
press flat and you are d-o-n-e done!

Just pull on the tank, wrap the ties around to cross at the back,
then around to the front where you tie them in a tie or bow.

3

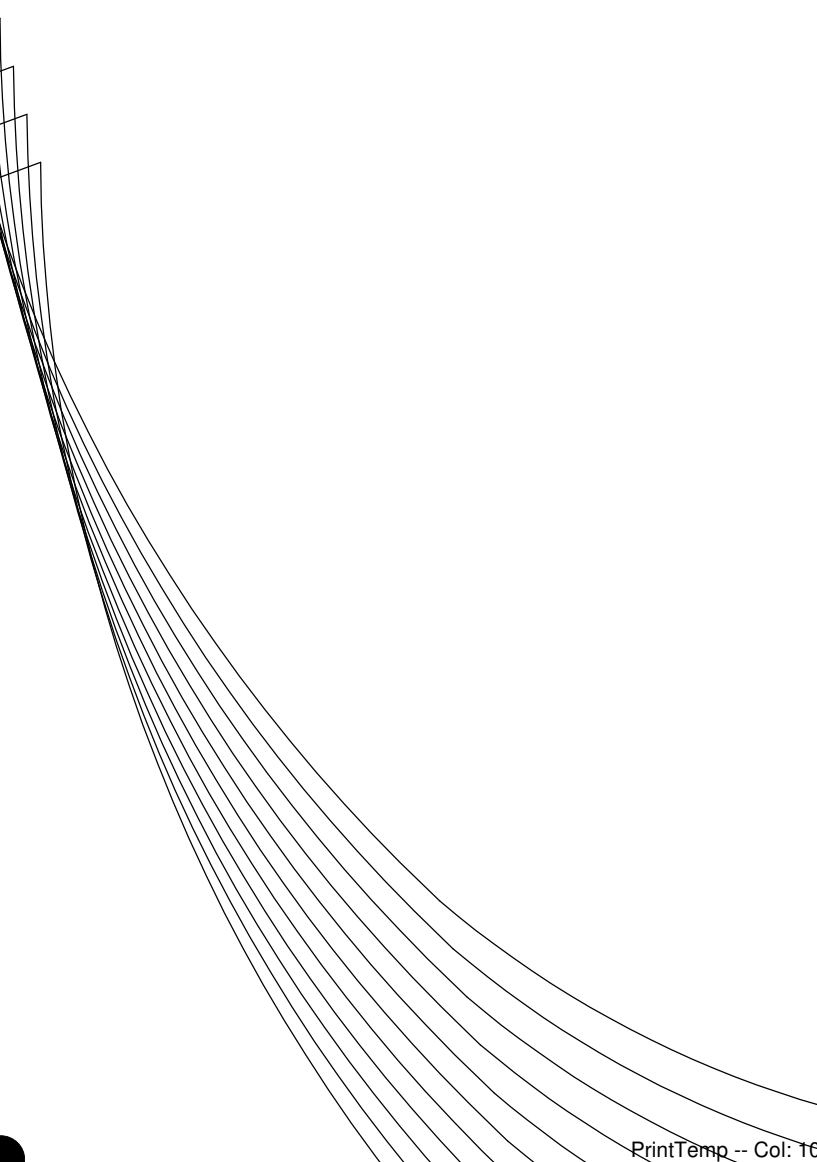


HotPatterns & fabric.com

exclusive free download
all wrapped up tank
armhole edging
cut 1 pair in fabric or ribbing

CTION

9



SIZE 26 CUT HERE
SIZE 24 CUT HERE
SIZE 22 CUT HERE
SIZE 20 CUT HERE
SIZE 18 CUT HERE
SIZE 16 CUT HERE
SIZE 14 CUT HERE
SIZE 12 CUT HERE
SIZE 10 CUT HERE
SIZE 8 CUT HERE
SIZE 6 CUT HERE

STRETCH DIREC

SIZE 26

12

- SIZE 24
- SIZE 22
- SIZE 20
- SIZE 18
- SIZE 16
- SIZE 14
- SIZE 12
- SIZE 10
- SIZE 8
- SIZE 6

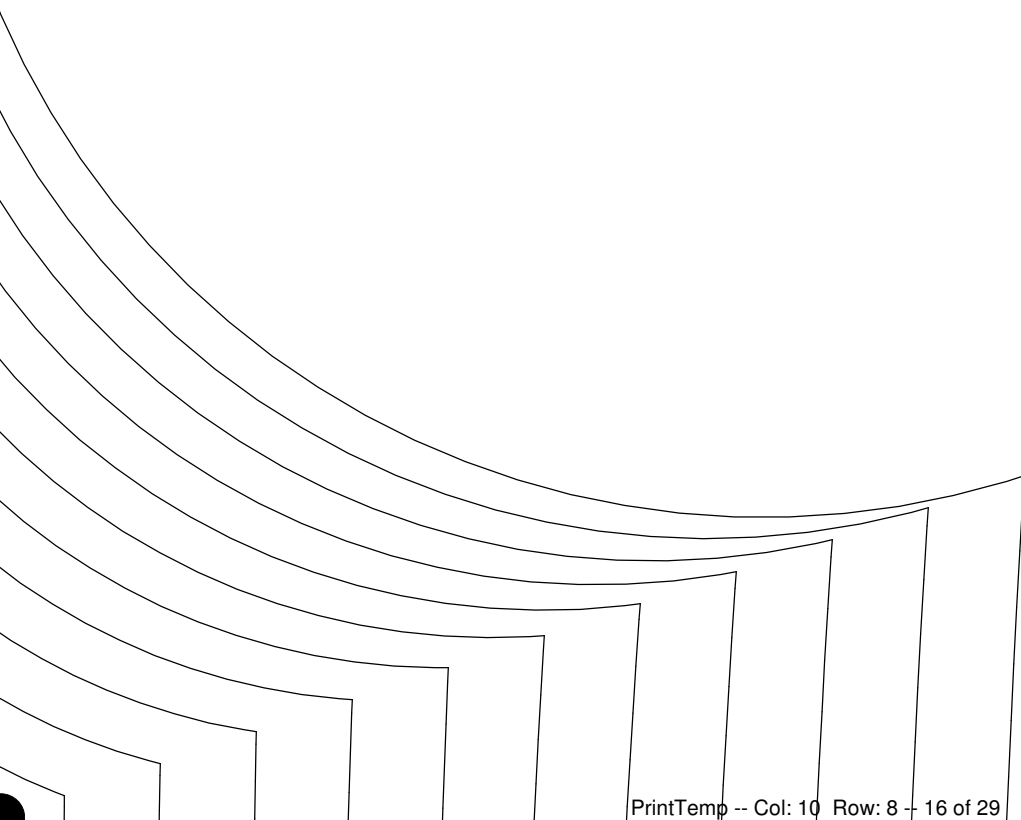
patterns & fabric.com

Inclusive free download
 All wrapped up tank
 front
 Cut 1 on fold in fabric

FOLD

STRETCH DIRECTION _____

FOLDLINE FOR TANK HEM _____



SIZE

SIZE 2

SIZE 22

SIZE 20

SIZE 18

SIZE 16

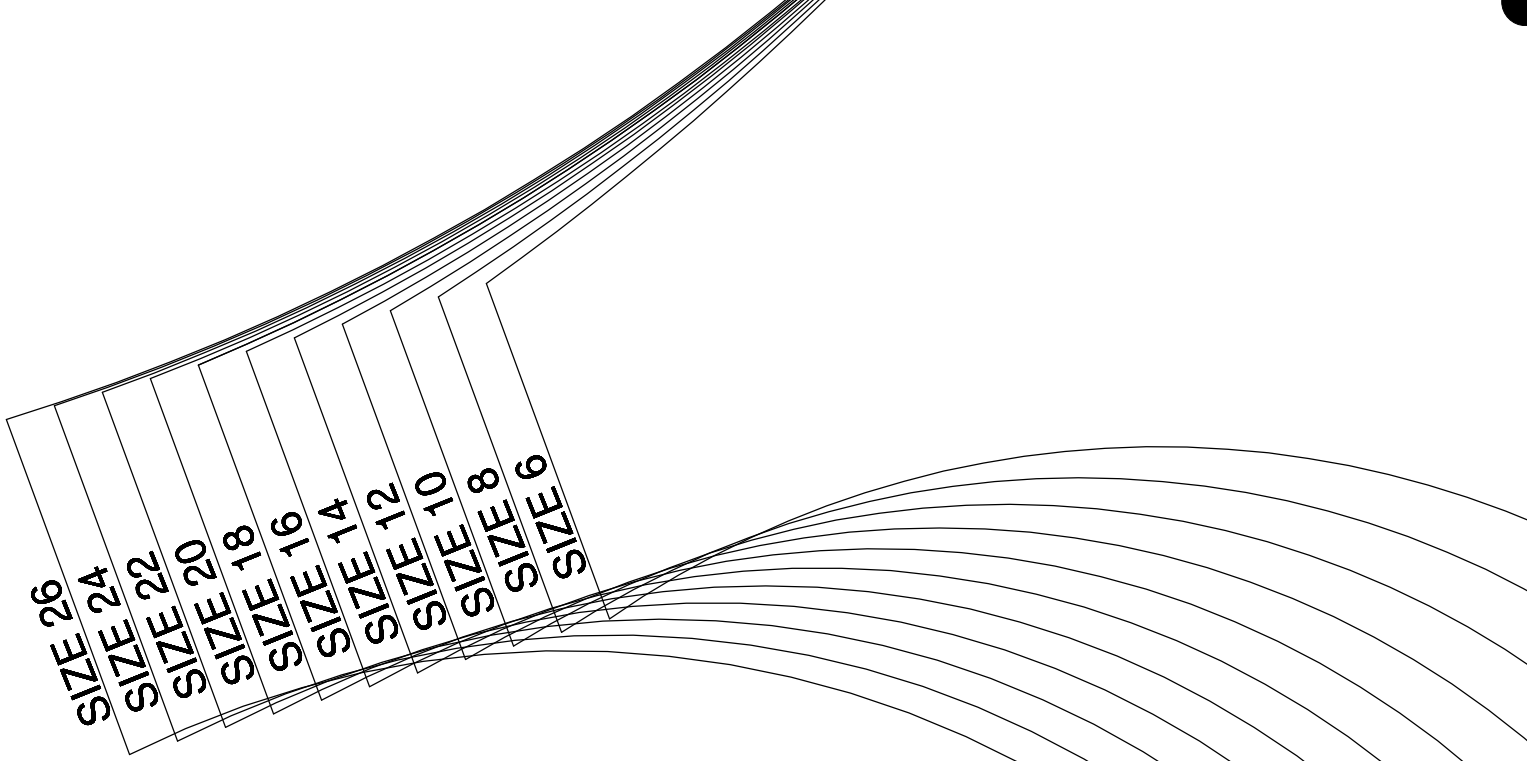
SIZE 14

SIZE 12

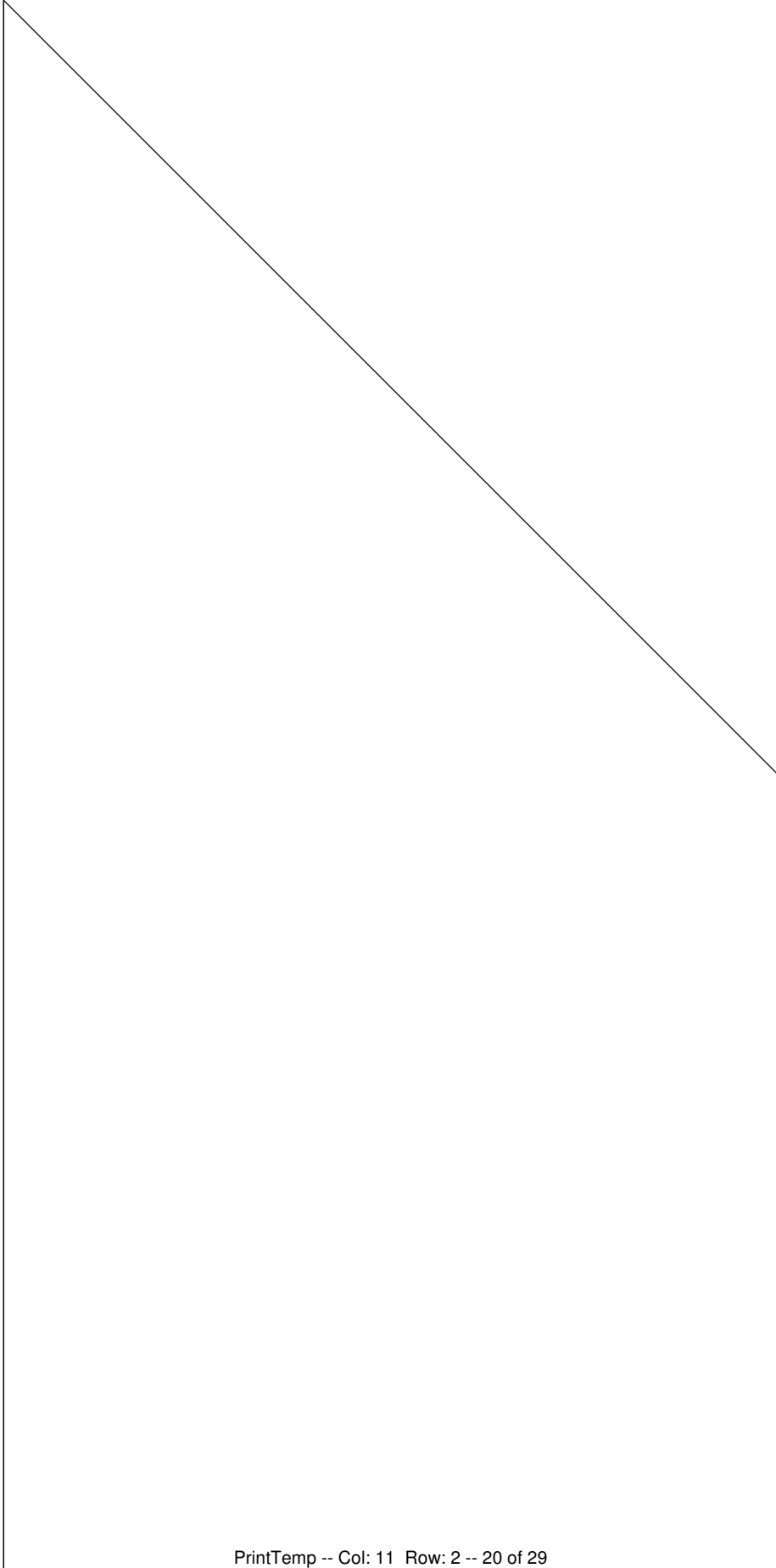
SIZE 10

SIZE 8

SIZE 6



1



7

STRETCH DIRECTION

1
Hot Patterns & **fabric.com**

exclusive free download

all wrapped up tank

ties

cut 1 pair in fabric

13

SIZE 6

SIZE 8

SIZE 10

SIZE 12

SIZE 14

15
SIZE 16

SIZE 18

SIZE 20

SIZE 22

SIZE 24

SIZE 26
SIZE 24
SIZE 22
SIZE 20
SIZE 18
SIZE 16
SIZE 14
SIZE 12
SIZE 10

19

SIZE 8

SIZE 6

NOTION

erms & fabric.com

ive free download
rapped up tank
front wrap
1 pair in fabric

STRETCH DIREC

HotDatta

exclusi

all w

cut

SIZE 6

SIZE 8

SIZE 10

SIZE 12

SIZE 14

SIZE 16

SIZE 18

SIZE 20

SIZE 22

SIZE 24

SIZE 26