

SKILL LEVEL

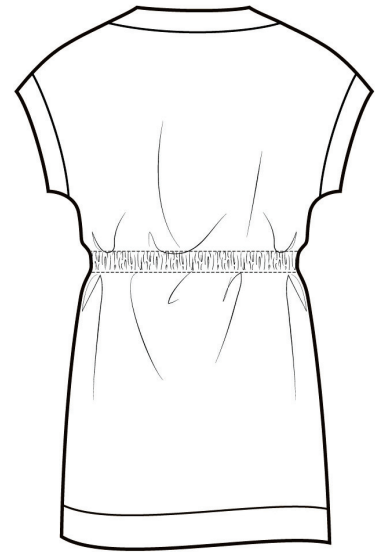
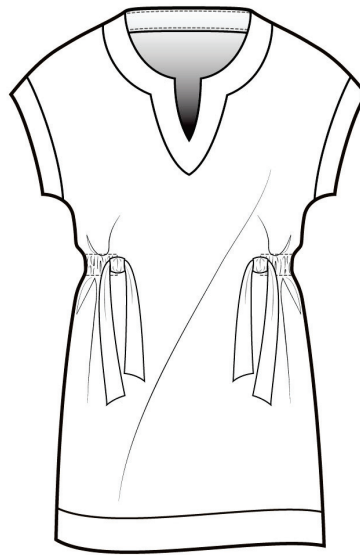


ADVANCED
BEGINNER

multisized
pattern...sizes
6/8/10/12/14/16
/18/20/22/24/26
all together!

www.hotpatterns.comtm
patterns so hot they're smokin'...

HotPatterns & fabric.com exclusive download
Medina mini-Kaftan



Work some exotic pool-side glamour with this cool summer-time cover-up, perfect for lightweight or semi-sheer fabrics like handkerchief linen, drape-y rayon or cotton voile, but also great in a lightweight T-shirting or a cotton lace. Pull-over, semi-fitted short kaftan has a shaped neckline with contrast trim applied to the outside of the garment. Kaftan finishes at mid-thigh and features contrast sleeve & hem bands, short sleeves and a drawstring at the waist. Wear this hot-weather essential over your swimsuit for a little coverage when you're lounging poolside, relaxing at the beach or chilling out at the bar.

Hot Patterns & fabric.com

exclusive free download medina mini-kaftan instructions page 1 of 3

SEAM ALLOWANCES & OTHER INFO

Seam allowances are 3/8" or 1cm wide; all seams are sewn right sides together unless otherwise stated.

The neckline has a contrast facing stitched onto the right side; the sleeve edges are finished with a 1.5" or 3.75cm deep doubled contrast band, and the hem finishes with a 2" or 5cm deep doubled contrast band.

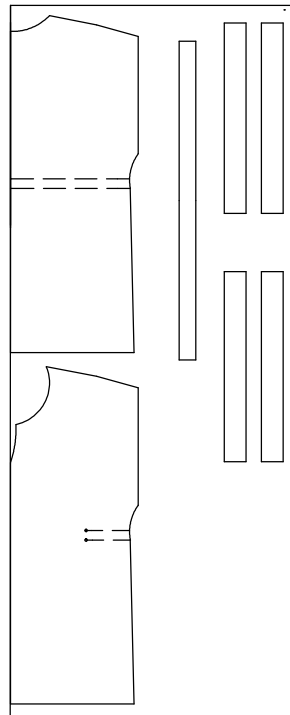
Skills needed include: making & applying a neck facing; making & applying a waist casing; making & inserting a drawstring; making & applying hem bands.

ABOUT THIS STYLE

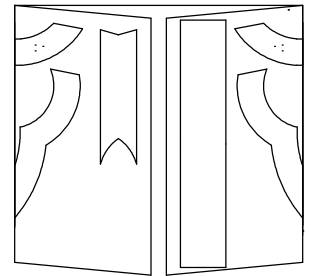
The Kaftan has an semi-fitted, slightly relaxed silhouette, with a drawstring at the waist for shaping.

Oh yes, as always, make & fit a muslin before you cut into your fabric...in this case, use a cheap fabric with a similar drape to your chosen fabric.

SUGGESTED CUTTING LAYOUT FOR THE KAFTAN fold fabric in half selvedge to selvedge for this layout



SUGGESTED CUTTING LAYOUT FOR THE CONTRAST TRIM fold fabric in half, with selvedges to the middle for this layout



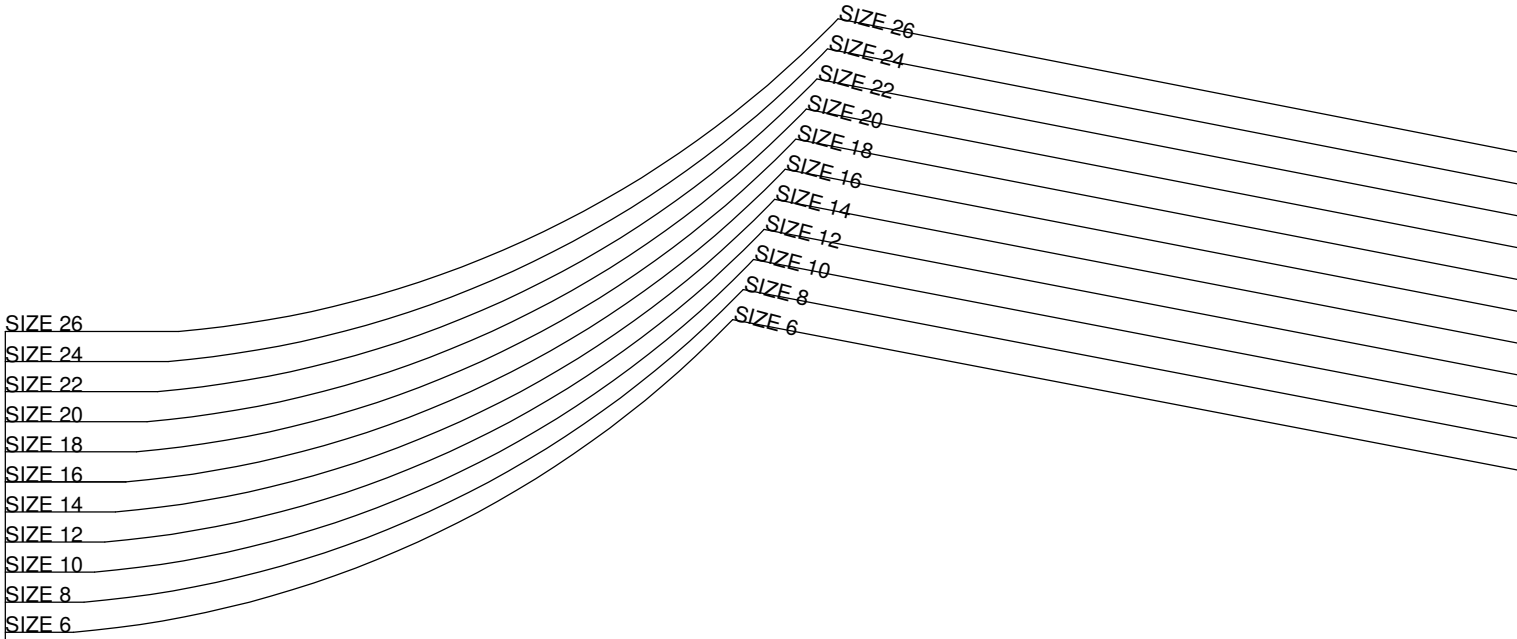
FABRIC & NOTIONS REQUIRED

You'll need around
2 1/4 yards/ 205 cm of
60"/150cm wide fabric,
plus 3/4yards/68 cm
contrast fabric.

You'll also need enough
3/4" or 2 cm wide
elastic to X 2/3 of your waist
measurement, plus
1/4 yard/23 cm
fusible interfacing.

make sure that you
apply your interfacing
& mark the position
of the drawstring casing
before you start sewing!

1



Hot Patterns

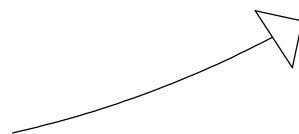
free download exclusively for

fabric.com

medina poolside kaftan
back

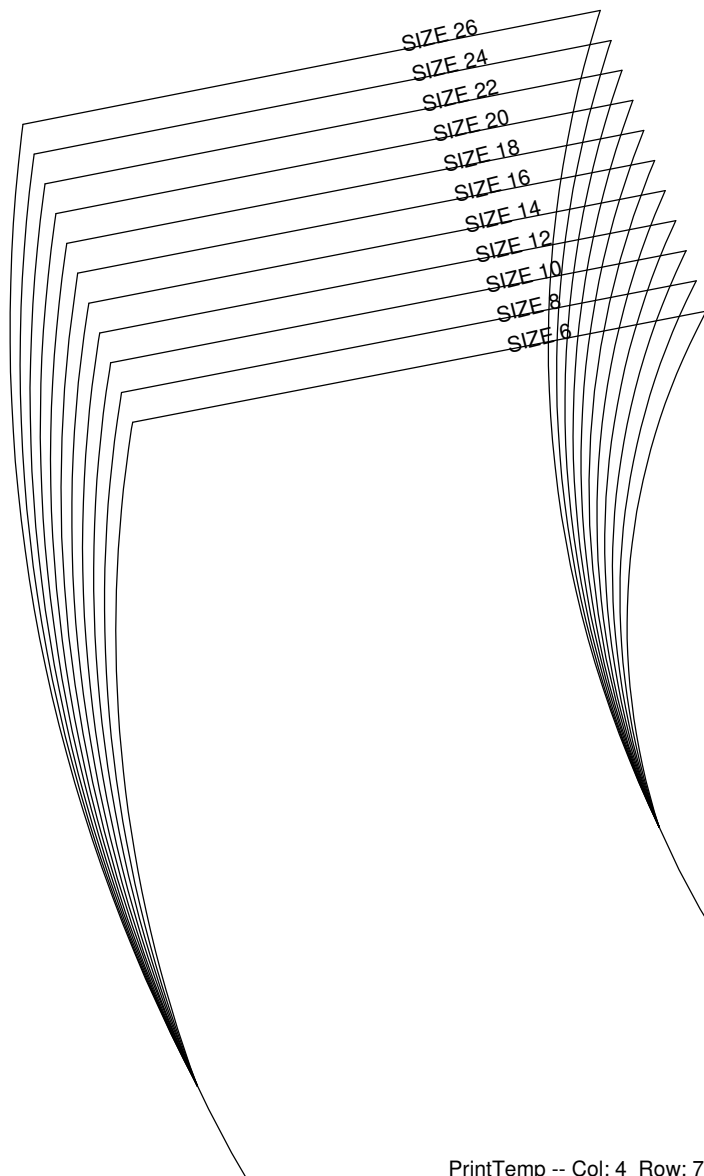
cut 1 on fold in fabric

FOLD



MARK THESE STITCHLINES

ON YOUR FABRIC...
THIS IS WHERE YOUR
BACK DRAWSTRING
POSITION



10

Hot Patterns

free download exclusively for
fabric.com

medina mini-kaftan
front neckline trim
cut 1 each on fold in
contrast & interfacing

13

FOLD

SIZE 26

SIZE 24

SIZE 22

SIZE 20

SIZE 18

SIZE 16

SIZE 14

SIZE 12

SIZE 10

SIZE 8

SIZE 6

Hot Patterns

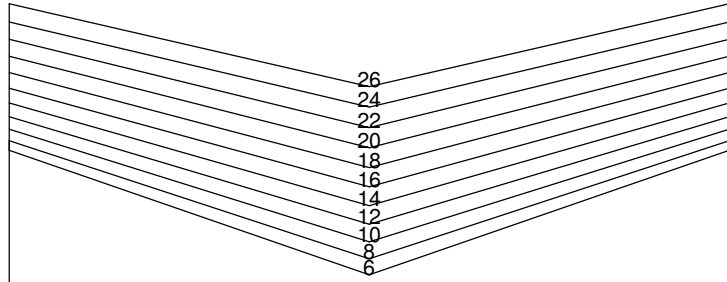
free download exclusively for

fabric.com

medina mini-kaftan drawstring casing

cut 1 on fold in fabric

16



Hot Patterns

free download exclusively for

fabric.com

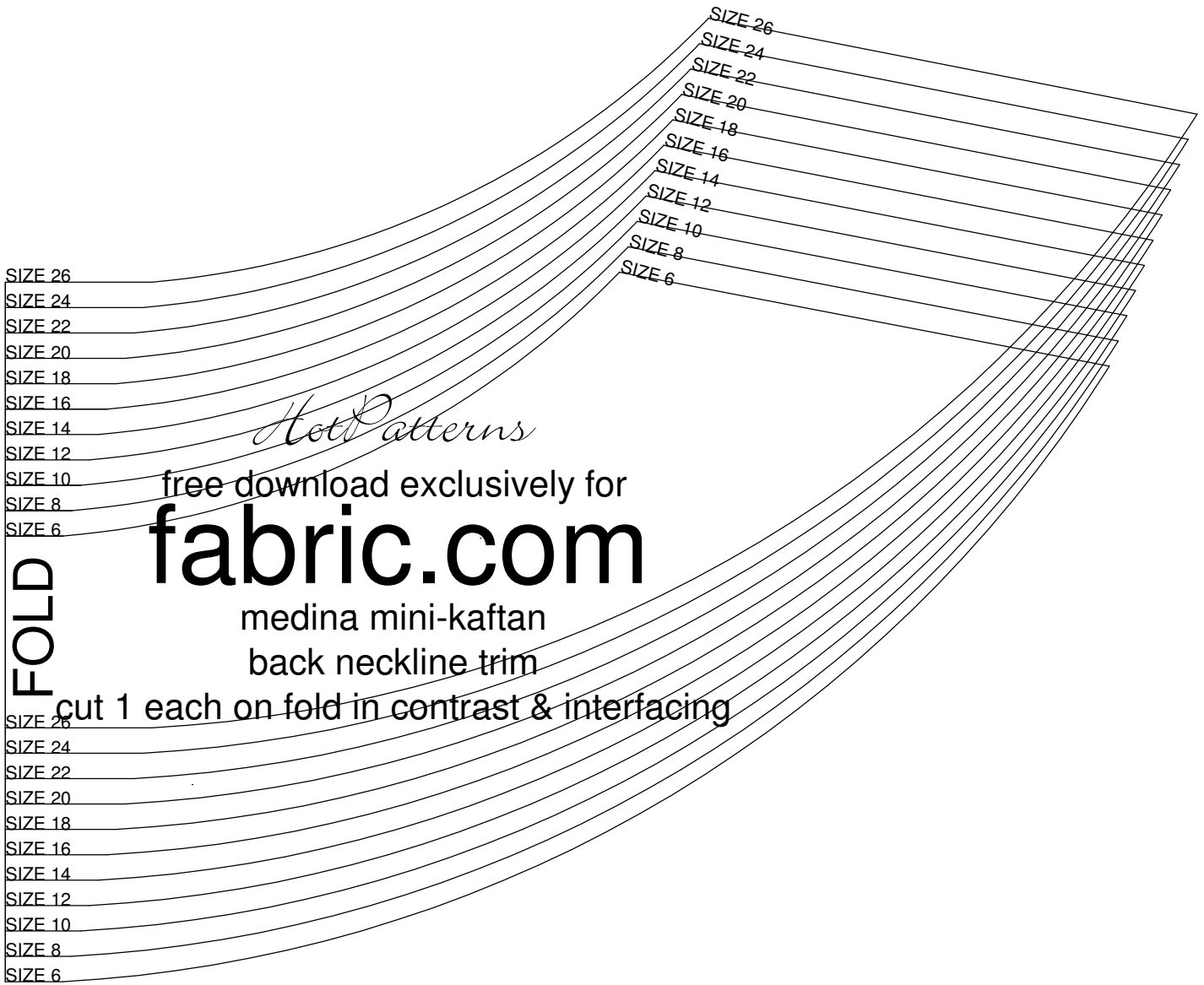
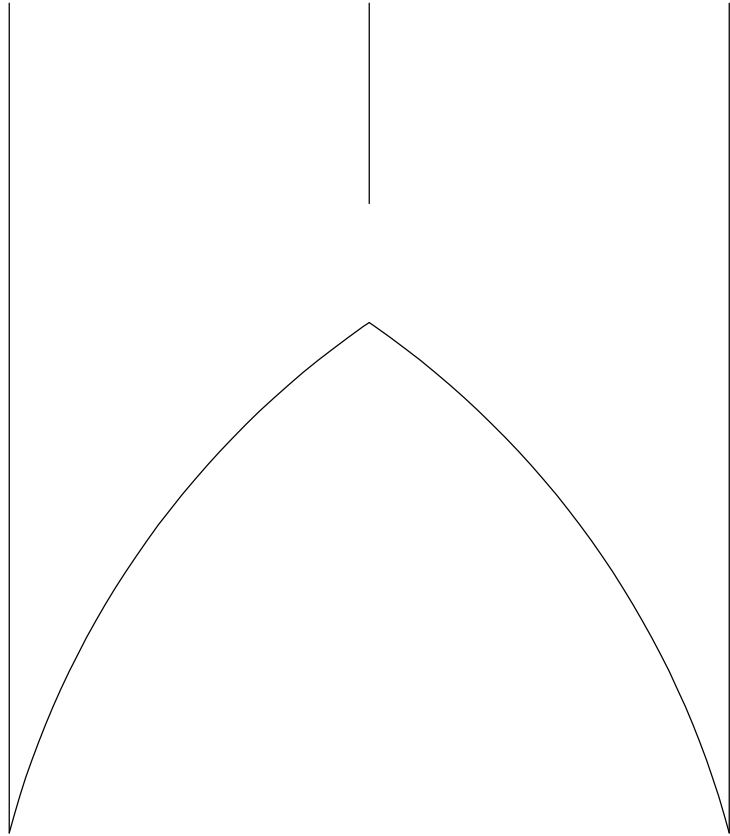
medina mini-kaftan

sleeve hem band

cut 2 pairs (4 in total) in contrast

FOLD

19



SIZE 26
SIZE 24
SIZE 22
SIZE 20
SIZE 18
SIZE 16
SIZE 14
SIZE 12
SIZE 10
SIZE 8
SIZE 6

SIZE 26
SIZE 24
SIZE 22
SIZE 20
SIZE 18
SIZE 16
SIZE 14
SIZE 12
SIZE 10
SIZE 8
SIZE 6

Hot Patterns

free download exclusively for
fabric.com

medina mini-kaftan
back neckline trim

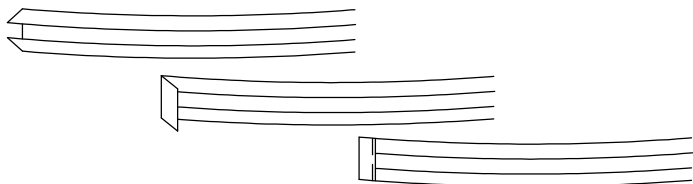
cut 1 each on fold in contrast & interfacing

FOLD
SIZE 26
SIZE 24
SIZE 22
SIZE 20
SIZE 18
SIZE 16
SIZE 14
SIZE 12
SIZE 10
SIZE 8
SIZE 6

instructions page 2 of 3

1a Start by preparing the drawstring casing.

Press the long edges of the casing under 3/8" or 1cm

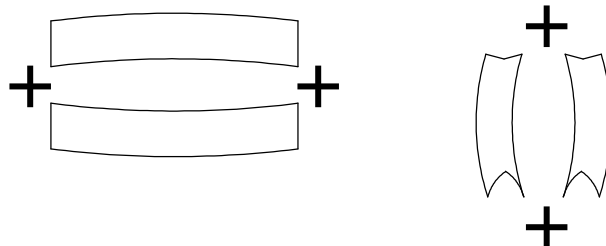


Press the short ends of the casing under 3/8" or 1cm, and topstitch. Press flat, then set aside until step 7.

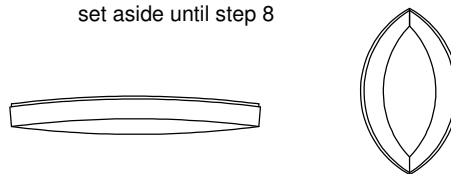
2a Prepare the hem & sleeve bands: join the front hem band to the back hem band along the side seams, to create a loop.

Repeat this with the sleeve bands, to create a pair of loops

Press all the seams open.



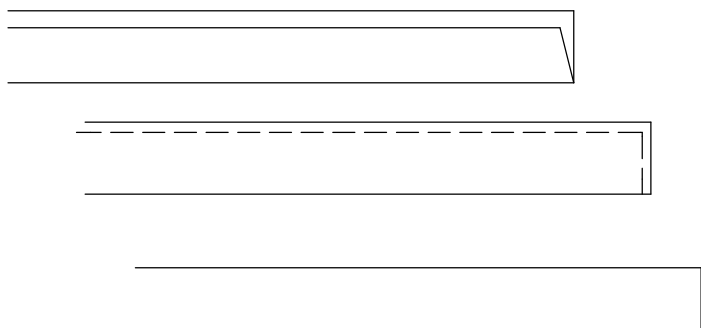
2b Fold the bands in half lengthways and press flat; set aside until step 8



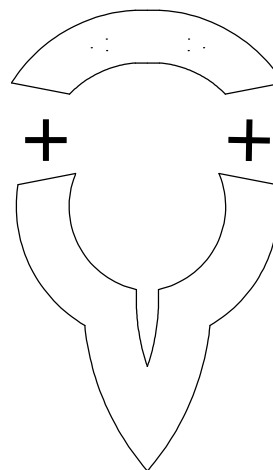
1b Prepare the drawstring: cut a piece of 3/4" or 2cm wide elastic to measure 2/3 of your waist measurement.

1c Join the long edges of the drawstring, then seal one of the short edges.

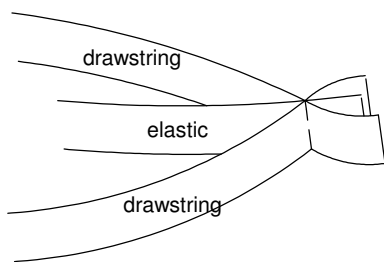
Clip the corners, press the seams open & turn out; press flat.



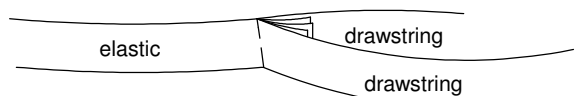
3a Join the front facing to the back facing along the shoulder seams, and press the seams open.



1d To complete the drawstring, join a pair of the fabric drawstring pieces to the short ends of the elastic, like this...



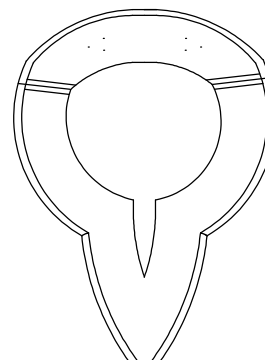
...this is what you'll end up with.



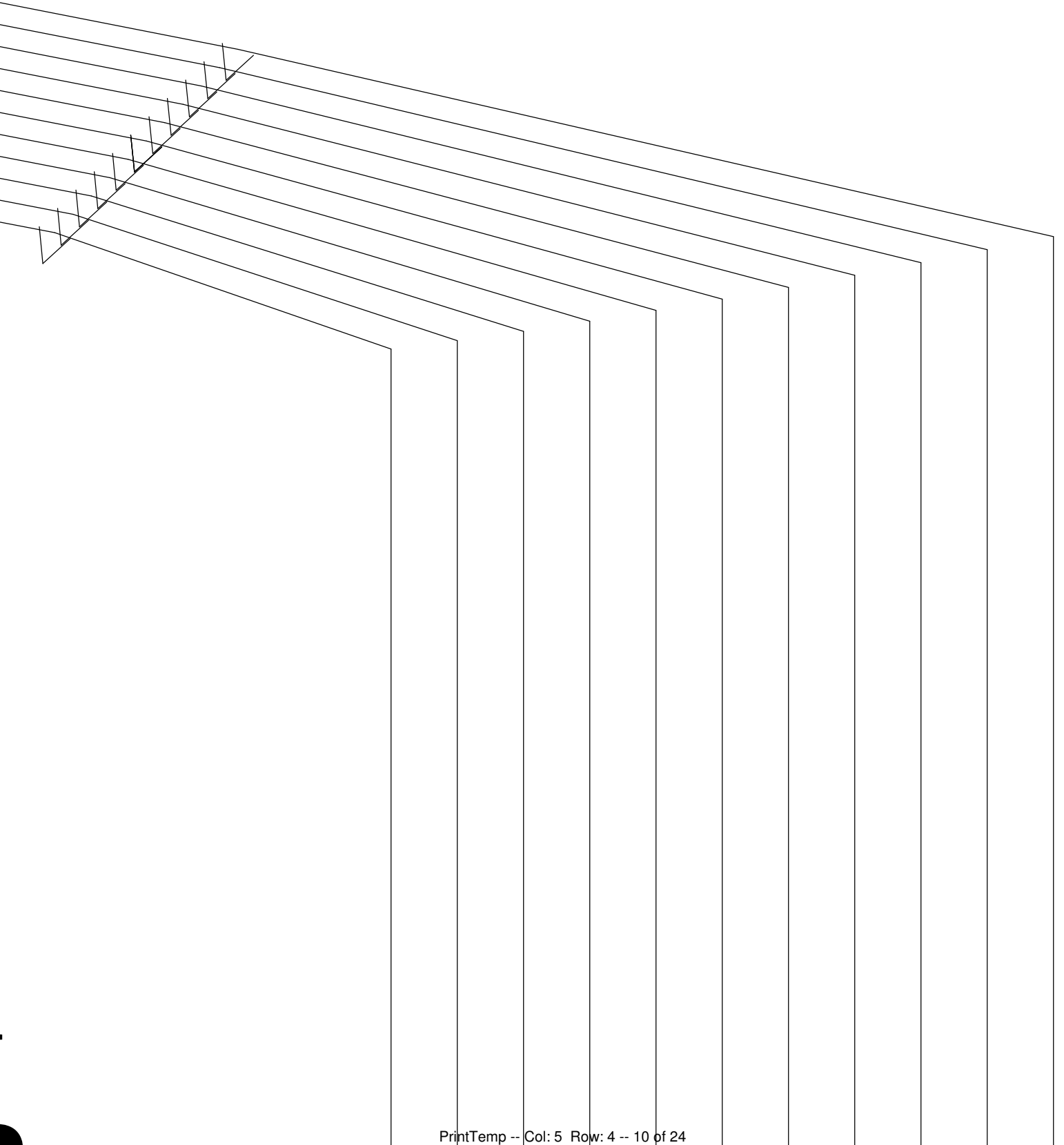
Press the outer edges of the neckline facing under 3/8" or 1cm. ***HOT TIP***

3b trace a copy of the back & front neckline pieces onto some card or stiff paper. Trim the outer 3/8" or 1cm off these pieces, then place them on the wrong side of the neckline pieces, and press the neckline trims around them.

This is what it will look like; set aside until step 5a.



2



SIZE 6

SIZE 8

SIZE 10

SIZE 12

SIZE 14

SIZE 16

SIZE 18

SIZE 20

SIZE 22

SIZE 24

SIZE 26

5

SIZE 6

SIZE 8

SIZE 10

SIZE 12

SIZE 14

SIZE 16

SIZE 18

SIZE 20

SIZE 22

SIZE 24

SIZE 26

SIZE 26

SIZE 24

SIZE 22

SIZE 20

SIZE 18

SIZE 16

SIZE 14

SIZE 12

SIZE 10

SIZE 8

SIZE 6

17

26 24 22 20 18

26 24 22 20 18

20

SIZE 26

SIZE 24

SIZE 22

SIZE 20

SIZE 18

SIZE 16

SIZE 14

SIZE 12

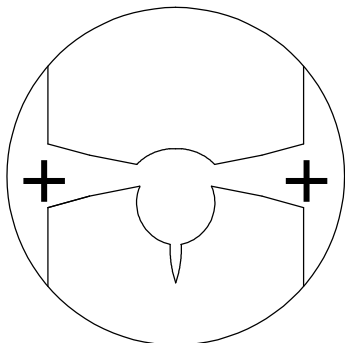
SIZE 10

SIZE 8

SIZE 6

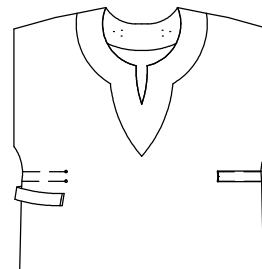
instructions page 3 of 3

4 Join the front to the back along the shoulder seams, and press the seams open.

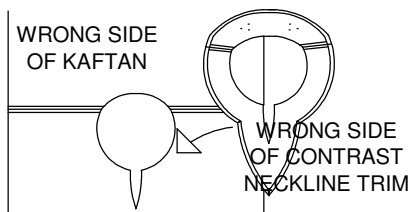


6 Join the front to the back along the side seams, and press the seams open.

7 Topstitch your drawstring casing onto the kaftan, lining the folded edges of the casing to the marks you made on the kaftan-you did do that, didn't you?

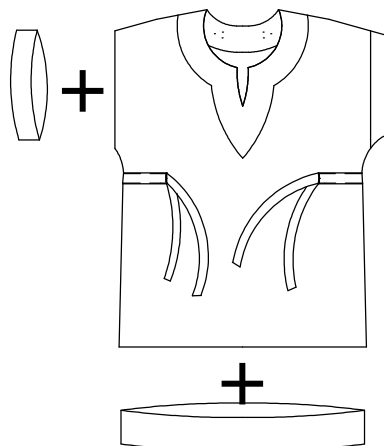


5a WRONG SIDE of the kaftan to RIGHT SIDE of the neckline trim, and matching the shoulder seams, the center front and center back, join the neckline facing to the kaftan.



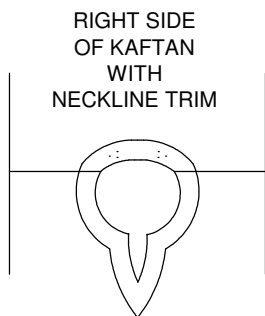
Complete the cover-up by joining the sleeve & hem bands to the sleeve and hem edges; press the seam allowances inside the garment.

Thread your drawstring through the casing...do this by pinning a safety pin through the drawstring and threading it in one opening, along the casing and out the other opening.



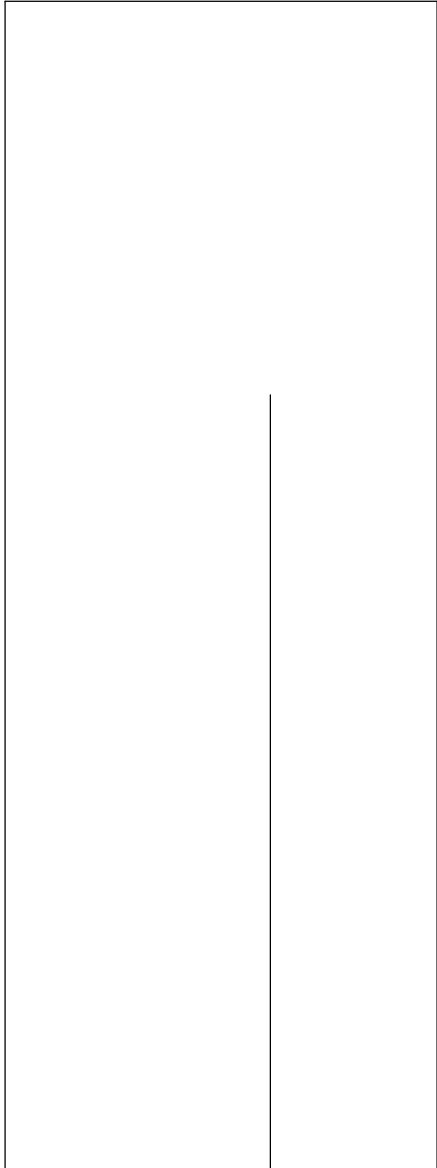
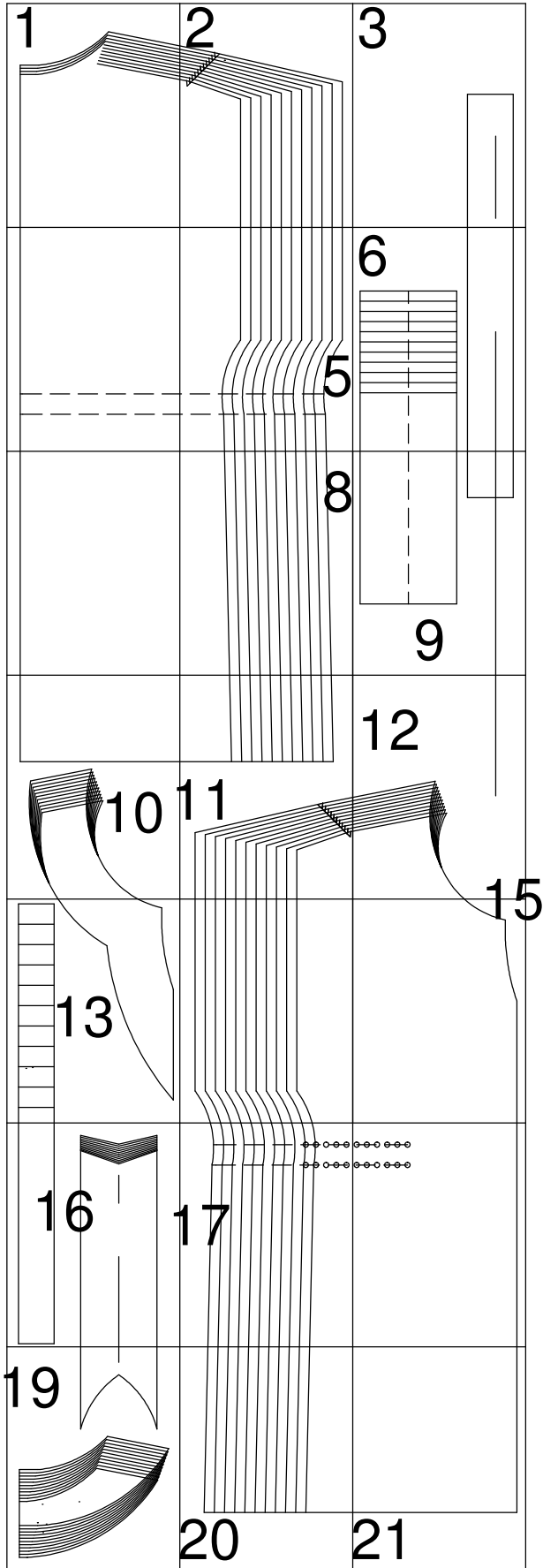
Clip the corners of the seam allowances, trim off the seam allowances as closely as you can, then turn the neckline trim to the right side of the kaftan. Press flat.

5a Topstitch the neckline trim down, starting and finishing at the center back.



Voila! Total summer-time gorgeousness!

3



6

	SIZE 6
	SIZE 8
	SIZE 10
	SIZE 12
	SIZE 14
	SIZE 16
	SIZE 18
	SIZE 20
	SIZE 22
	SIZE 24
	SIZE 26

Hot Patterns
free download exclusively for
fabric.com
medina mini-kaftan drawstring
cut 2 pairs (4 in total) in fabric

Hot Patterns

free download exclusively for

fabric.com

medina mini-kaftan

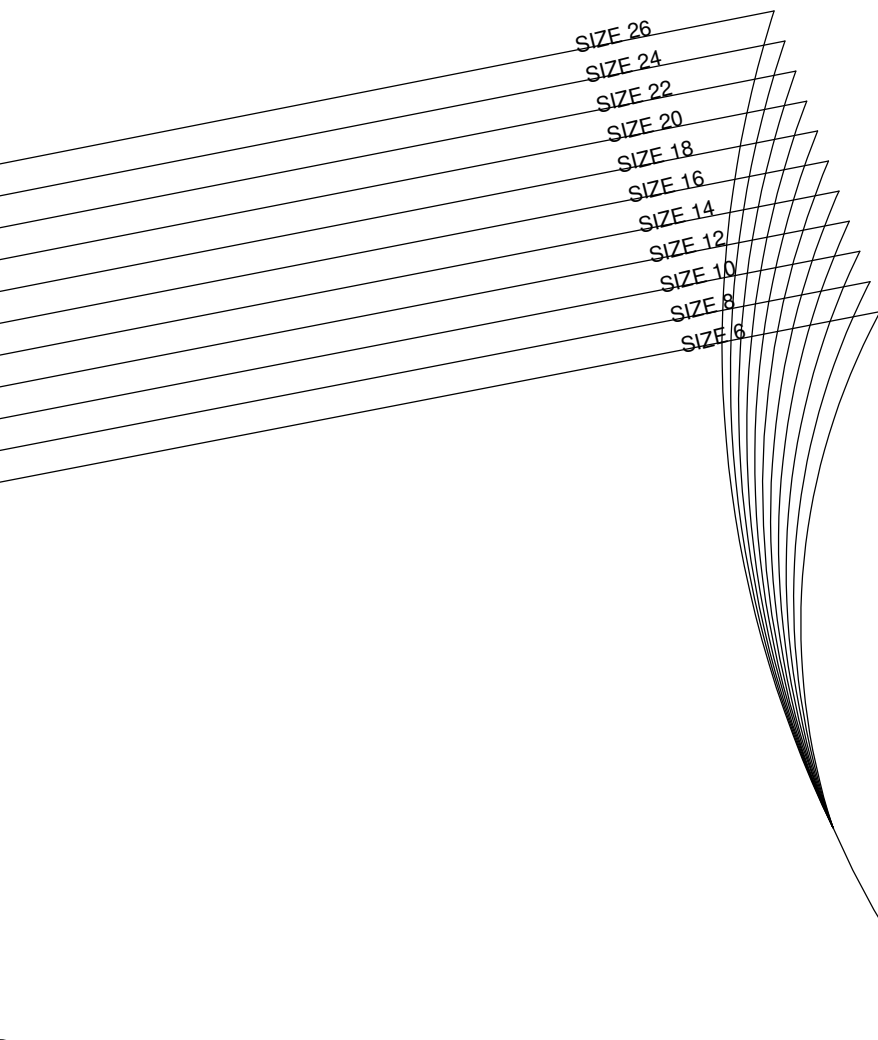
front & back hem trim

cut 1 pair each on fold in

contrast & interfacing

9

12



Hot Patterns

free download exclusively for

fabric.com

medina mini-kaftan

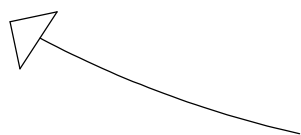
front

cut 1 on fold in fabric

FOLD

①⑥ - ①④ - ①② - ①① - ①⑧ - ①⑥

①⑥ - ①④ - ①② - ①① - ①⑧ - ①⑥



MARK YOUR SIZE'S DRILL HOLE
ON THE FRONT ONLY...
THIS IS WHERE YOUR
FRONT DRAWSTRING
STARTS & STOPS

21