

SKILL LEVEL



ADVANCED
BEGINNER

multisized
pattern...sizes
6/8/10/12/14/16
/18/20/22/24/26
all together!

www.hotpatterns.com[®]
patterns so hot they're smokin'...

HotPattern & fabric.com exclusive download
Cool, Calm & Cowl-necked Top



Deliciously simple top, designed for drapey knits with a stretchy rib trim... try rayon, cotton, bamboo or silk knits. Relaxed-fit Top has a drapey, shallow cowl with a cut-on front facing, and a gently scooped back neckline.

Top features cut-on cap sleeves and a deep ribbed band at the hem; top finishes at the lower hip.

Wear this great basic piece with your favorite jeans or pants for a fabulously simple but chic everyday or weekend look.

Hot Patterns & fabric.c

exclusive free download
cool, calm & cowl-necked top
back

cut 1 on fold in fabric

FOLD

<<<STRETCH DIRECTION>>>

Hot Patterns & fabric.com

exclusive free download cool, calm & cowl-necked top instructions page 1 of 2

SEAM ALLOWANCES & OTHER INFO

Seam allowances are 3/8" wide;
all seams are sewn right sides together
unless otherwise stated.

Hem on the body of the T-Shirts is finished with
a doubled rib knit trim and the sleeves have a narrow
hem, or you can leave them unfinished.

Skills needed include: sewing with knits (it's easy!)
making & attaching a shaped back neck facing;
working a narrow hem; attaching a rib trim.

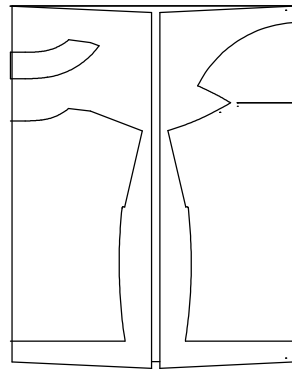
ABOUT THIS STYLE

This Top has a semi-fitted, slightly relaxed silhouette.

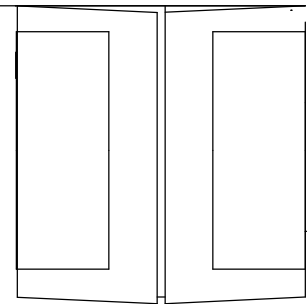
The top edge of the rib trim is designed to sit at your
natural waist, with the body of the top blousing over
it which is a really flattering look!

Oh yes, as always, make & fit a muslin before
you cut into your fabric...in this case, use a
cheap knit with a similar drape to your chosen fabric.

SUGGESTED CUTTING LAYOUT
FOR THE TOP
fold fabric in half, with the selvages
to the middle for this layout



SUGGESTED CUTTING LAYOUT
FOR THE RIB TRIM
fold ribbing in half, with the selvages
to the middle for this layout



FABRIC & NOTIONS REQUIRED

You'll need around 1 yard/ 90 cm of 60"/150cm
wide fabric and 5/8 yard/56 cm of 60"/150cm wide ribbing.

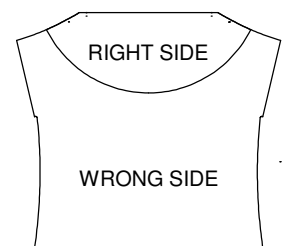
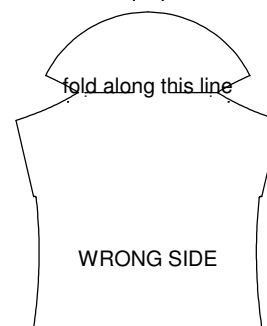
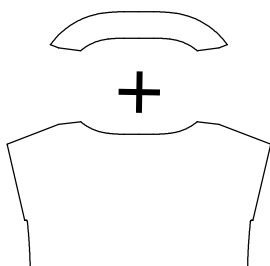
You'll also need a scrap of knit interfacing...
about 4"/10cm X 14"/35cm

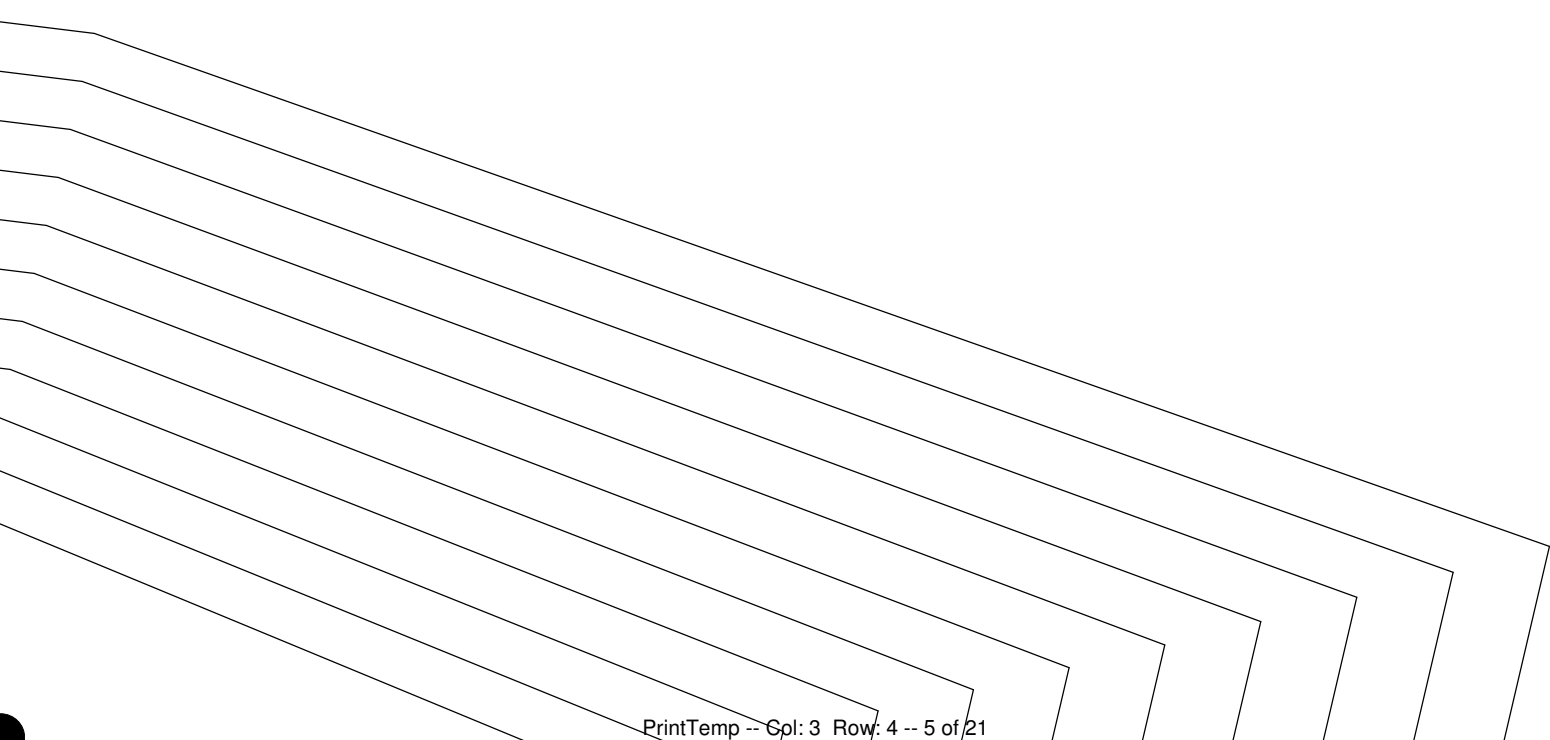
1 Start by interfacing the back neck facing.

3

Fold the cowl neck facing to the inside of the cowl front,
and baste the front & facing together along the shoulder seams.

2 Join the back neck facing to the back neckline
Press the seam open, but DO NOT understitch!





com

o

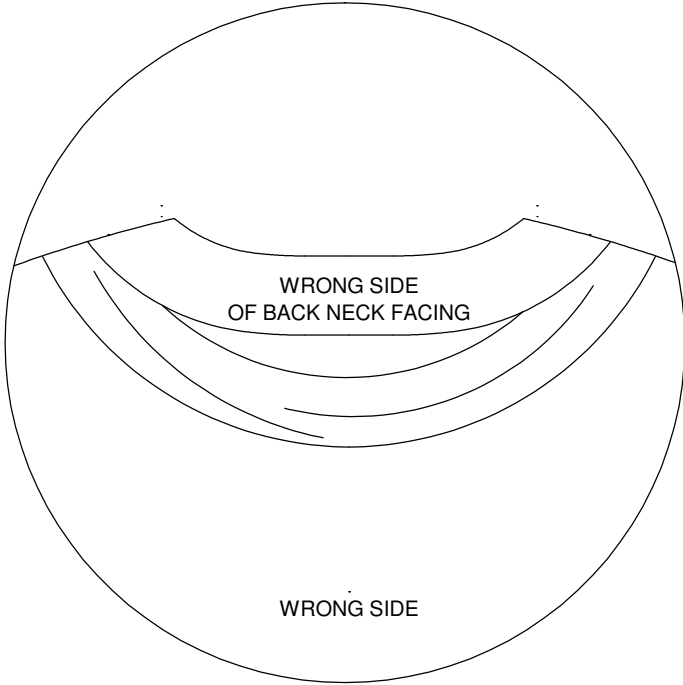
v

SIZE 6 CUT HERE
SIZE 8 CUT HERE
SIZE 10 CUT HERE
SIZE 12 CUT HERE
SIZE 14 CUT HERE
SIZE 16 CUT HERE
SIZE 18 CUT HERE
SIZE 20 CUT HERE
SIZE 22 CUT HERE
SIZE 24 CUT HERE
SIZE 26 CUT HERE

instructions page 2 of 2

- 4 Place the shoulder seams of the back and the front/front facing together, then fold the back neck facing down, so it matches up with the shoulder seamlines.

Starting at the neck edge (not the shoulder) and sewing through all thicknesses, join the front to the back along the shoulder.

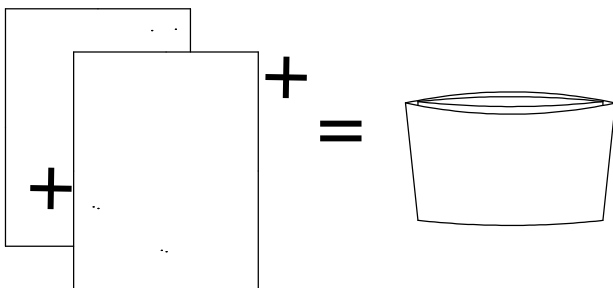


Clip the corners, then press the seam allowances towards the back.

Stitch the bottom edge of the back neck facing down.

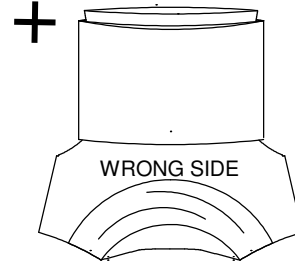
- 5 Join the fronts to the back at the side seams, and press the seams to the back.

- 6a Join the hem ribbing at the long ends to create a loop.

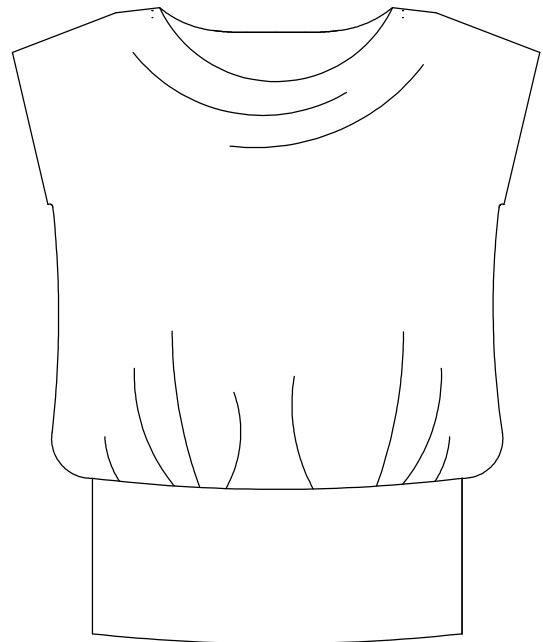


Fold it in half width ways, so you get a doubled thickness loop of ribbing...the folded edge will be the hem of the top.

Matching the side seams of the top to the side seams of the rib loop, join the bottom edge of the top to the top edge of the rib loop...you'll need to stretch the rib loop to make it fit.



Complete the top by working a narrow hem along the armholes, then press the top.



Done! And pretty darn fabulous too...



Hot

e

COO

SIZE 26 CUT HERE
SIZE 24 CUT HERE
SIZE 22 CUT HERE
SIZE 20 CUT HERE
SIZE 18 CUT HERE
SIZE 16 CUT HERE
SIZE 14 CUT HERE
SIZE 12 CUT HERE
SIZE 10 CUT HERE
SIZE 8 CUT HERE
SIZE 6 CUT HERE

SIZE 26 CUT HERE
SIZE 24 CUT HERE
SIZE 22 CUT HERE
SIZE 20 CUT HERE
SIZE 18 CUT HERE
SIZE 16 CUT HERE
SIZE 14 CUT HERE
SIZE 12 CUT HERE
SIZE 10 CUT HERE
SIZE 8 CUT HERE
SIZE 6 CUT HERE

fabric.com

Hot Patterns
exclusive free download
cool, calm & cowl-necked top
back neck facing
cut 1 on fold in fabric
cut 1 on fold in interfacing

FOLD

SIZE 26 FOLD HERE
SIZE 24 FOLD HERE
SIZE 22 FOLD HERE
SIZE 20 FOLD HERE
SIZE 18 FOLD HERE
SIZE 16 FOLD HERE
SIZE 14 FOLD HERE
SIZE 12 FOLD HERE
SIZE 10 FOLD HERE
SIZE 8 FOLD HERE
SIZE 6 FOLD HERE

Patterns & fabric.com

exclusive free download

l, calm & cowl-necked top
front

cut 1 on fold in fabric

<<<STRETCH DIRECTION>>>

FOLD

| | | | | | | | | | | | |
|--|--|--|--|--|--|--|--|--|--|--|--|
| | | | | | | | | | | | |
|--|--|--|--|--|--|--|--|--|--|--|--|

Hot Pattern

exclusiv
cool, calm
back
cut 1 o
cit 1 on f

<<<STRET

SIZE 26 CUT HERE
SIZE 24 CUT HERE
SIZE 22 CUT HERE
SIZE 20 CUT HERE
SIZE 18 CUT HERE
SIZE 16 CUT HERE
SIZE 14 CUT HERE
SIZE 12 CUT HERE
SIZE 10 CUT HERE
SIZE 8 CUT HERE
SIZE 6 CUT HERE

Patterns & fabric.com

Free download
& cowl-necked top
Neck facing
Fold in fabric
Fold in interfacing

ATCH DIRECTION>>>

FOLD