

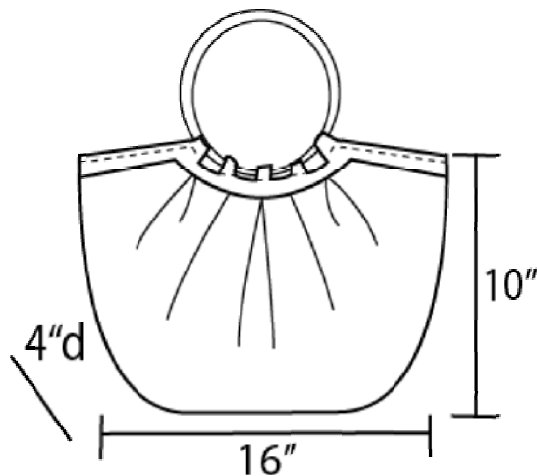
SKILL LEVEL



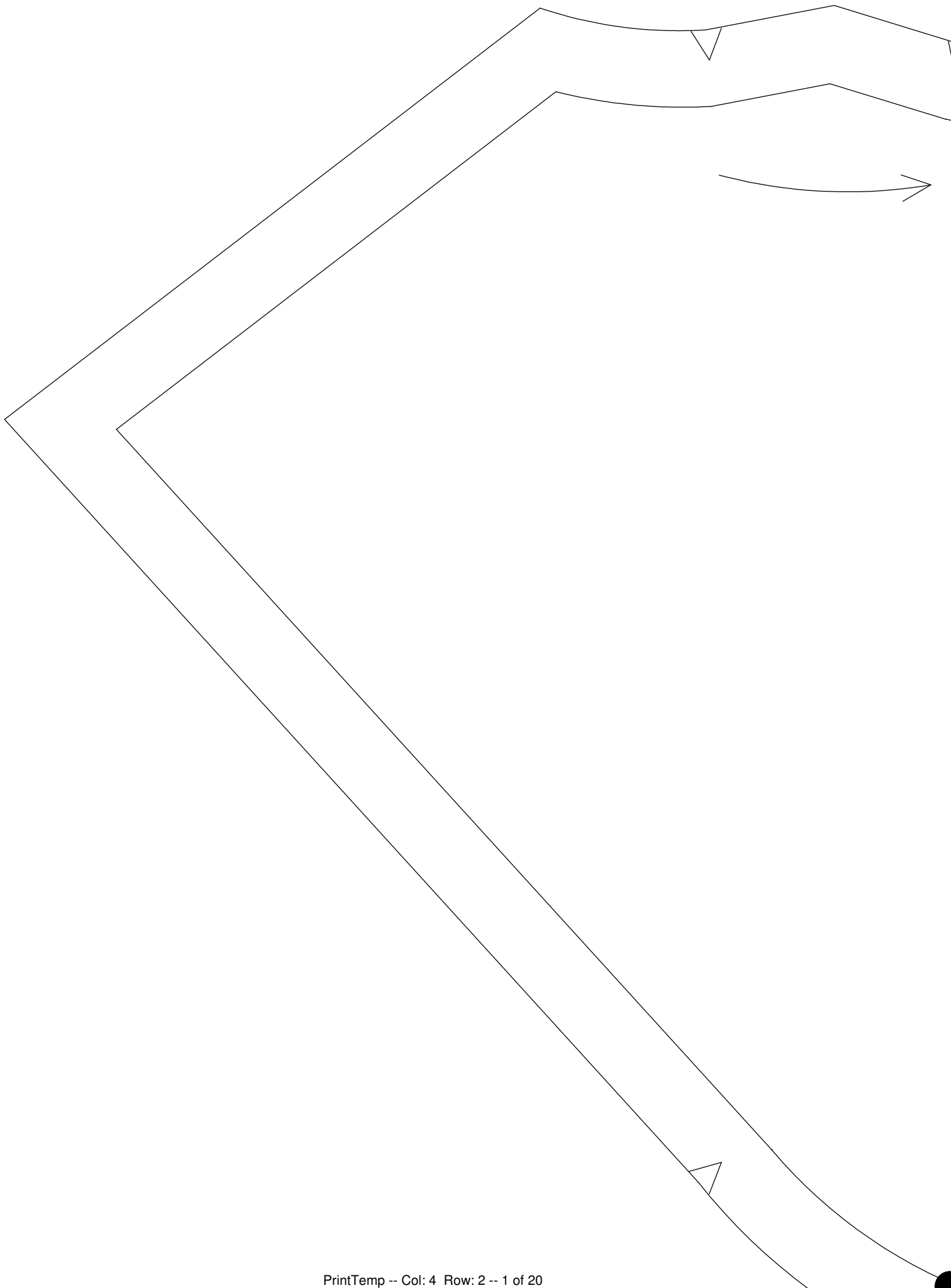
ADVANCED
BEGINNER

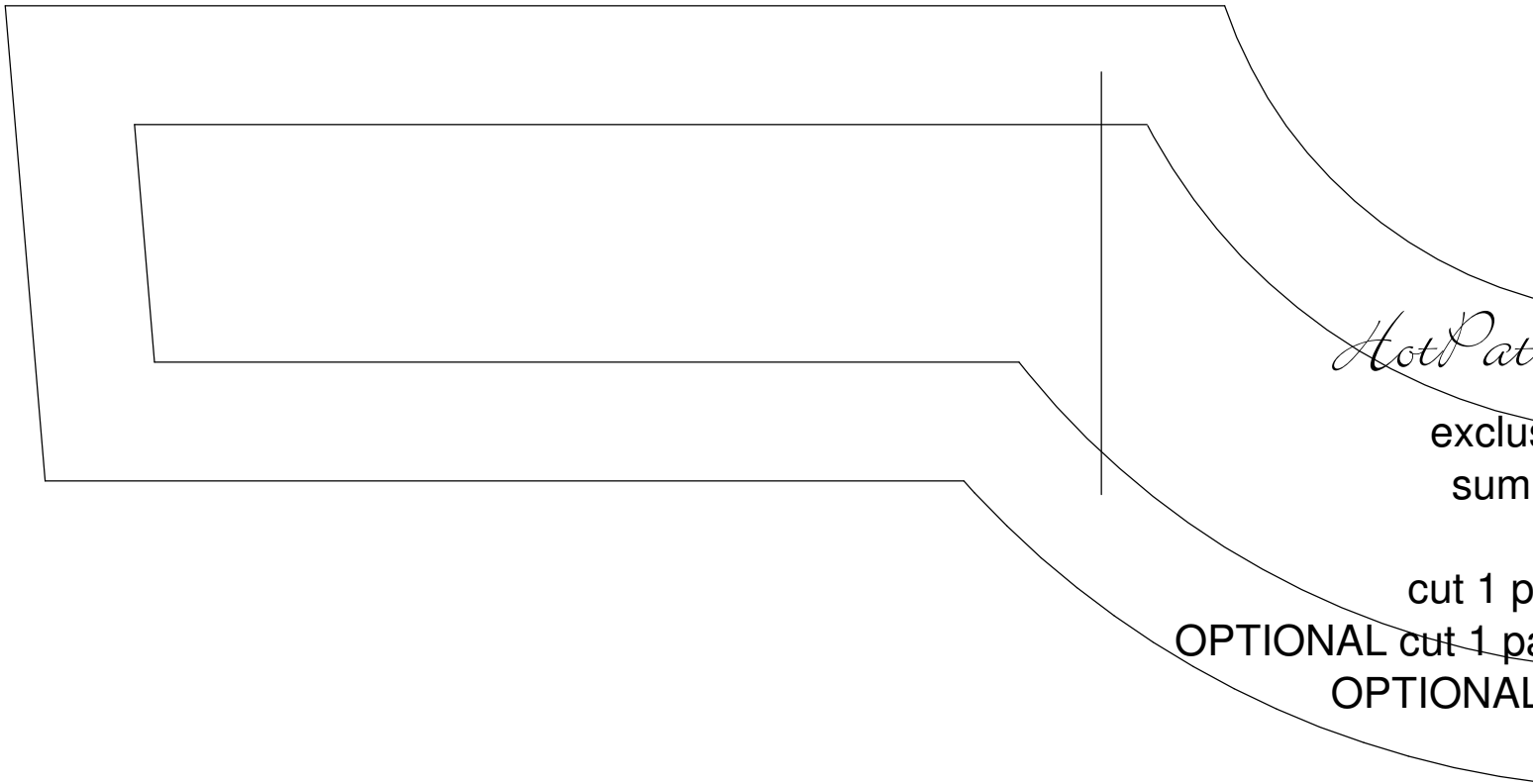
www.hotpatterns.com[®]
patterns so hot they're smokin'...

HotPatterns & fabric.com exclusive download
Sumatra Mini-Shopper



A fabulously ultra-femme but spacious tote bag, just perfect for your favorite crisp silks or cottons, or for using those gorgeous home-dec fabrics in your stash, and featuring those funky bamboo handles. Bucket shaped Mini-Shopper has deep pleats on the front & back, a bound top edge and purchased bamboo ring handles attached with self or contrast loops. This bag is open at the top, and features optional phone & zippered pockets. Wear this super bag style with your favorite jeans and a crisp white shirt for a chic everyday look, or try it with a summery dress and slides.





Hot Patterns

exclus
sum

cut 1 p

OPTIONAL cut 1 pa

OPTIONAL



Hot Patterns & fabric.com

exclusive free download

sumatra mini-shopper

front & back facing

cut 1 pair in contrast fabric

OPTIONAL cut 1 pair in canvas or similar for mou

OPTIONAL cut 1 pair in interfacing

This is the suggested
zipped pocket placement.
This pocket goes on
1 side of the lining.

This is the suggested
small pocket & cell phone
pocket placement.
This pocket goes on
1 side of the lining.

Hot Patterns & fabric.com

exclusive free download sumatra mini-shopper instructions page 1 of 4

SEAM ALLOWANCES & OTHER INFO

Seam allowances are 5/8" wide APART FROM the zipper seam allowances on the interior pocket, which is 3/4" wide. All seams are sewn right sides together unless otherwise stated.

Skills needed include: inserting a centered zipper; pleating fabric; attaching circular handles (easy!); making & inserting a bag lining (outrageously easy!); applying a magnetic closure (need we say it? super-easy!).

ABOUT THIS STYLE

This Mini-Shopper is nicely roomy without being unwieldy; as it has a classic tote shape, we recommend using a magnetic closure at the top...this stops your stuff spilling out!

The interior pockets are optional, but super-useful; if you don't want to have them, then don't! It's your bag after all...

WHAT IS A 'MOUNT'?

You'll see some pattern pieces marked as 'mount', to be cut in canvas or a similar fabric.

A 'mount' is kinda like interlining...but kinda not.

When you use a mount, you are basically applying a pleated, gathered or ruched piece (in this case, the pleated front & back) onto a flat piece-the mount. The mount forces the pleated/gathered/ruched piece to retain the shape it needs.

For this bag, we recommend three things when it comes to the mounting your fabric:

First off, because you'll be mounting the pleated front & back, you'll also need to mount the side/bottom, so the fabric has the same thickness.

Next, you may decide to mount the contrast pieces too...this all depends on the thickness of your contrast fabric, but it's not essential to mount or even interface the contrast pieces...it all depends on your fabric, and your personal taste.

Finally, you can interface the mount pieces, or not, again, depending on your fabric and your personal preferences.

Mount a few scraps of fabric to see how your fabric behaves. You may choose a lighter mount fabric; you may decide on a stiffer interfacing for the mount...whatever works for you!

Don't bother making a muslin for this (as if you would!) but we do recommend that you pin the pattern together before you start cutting your fabric, just to see how it goes together.

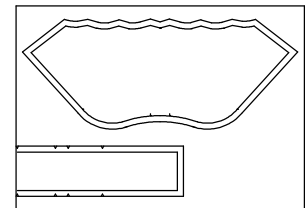
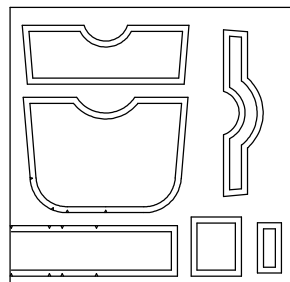
FABRIC & NOTIONS REQUIRED

You'll need around 1 yard each of fabric, lining and mount fabric; you'll also need around 3/4 yard of contrast fabric.

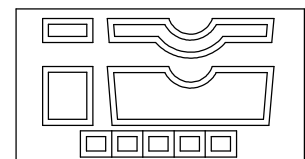
If you want to interface the mount fabric, add a yard of interfacing.

To complete the bag, you'll need a pair of 6" diameter circular handles, one magnetic closure and a 8" zipper.

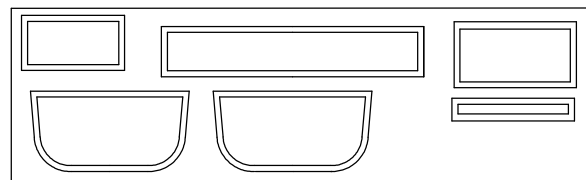
SUGGESTED MOUNT CUTTING LAYOUT fold fabric in half from selvedge to selvedge
SUGGESTED FABRIC CUTTING LAYOUT fold fabric in half from selvedge to selvedge
for this layout *please note* if you want to interface your mount fabric, cut these pieces in interfacing too.

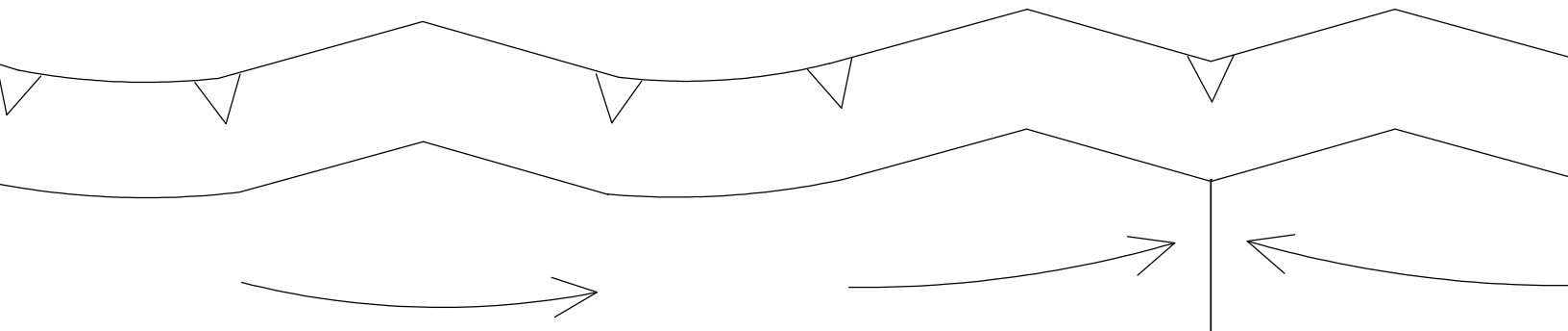


SUGGESTED CONTRAST CUTTING LAYOUT fold fabric in half from selvedge to selvedge
for this layout



SUGGESTED LINING CUTTING LAYOUT lay fabric open for this layout





Hot Patterns & fabric

exclusive free download
sumatra mini-shoppe
front & back panel
cut 1 pair in fabric

terns & fabric.com

ive free download

tra mini-shopper

contrast

air in contrast fabric

air in canvas or similar for mount

cut 1 pair in interfacing

m

MAGNETIC
CLOSURE
OR SNAP
GOES HERE

nt

HotPatterns & fabric.com

exclusive free download
sumatra mini-shopper
front & back lining
cut 1 pair in lining

instructions page 2 of 4

Interface all the mount pieces if you are using interfacing.

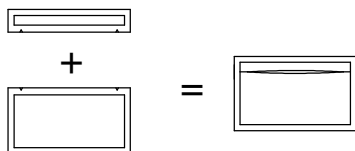
1 If you don't want to interface the entire mount, be sure to interface the magnetic closure area, plus the zipper openings, as marked on the pattern.

2 Apply the magnetic closure or snap fastening Tote facing see the pattern for the correct position.

3 Prepare the handle loop strips:
Fold each strip in half lengthways, and join the 2 long edges so you have an open ended tube. Press the seam allowances open, and turn out, then press the strip flat.

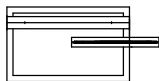
Cut each strip into 5 equal pieces, then set aside until step 13

4a Prepare the lining zippered pocket ...join the upper & lower parts of the zippered pockets from the cut edges to the notches, so you have a large opening for the zipper.

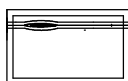


Baste the large zipper opening closed along the same line, and press the seam allowances open.

Working on the wrong side of the pocket, center the zipper over the basted seamline. Pin or baste the zipper into position.



Flip the pocket over to the right side. Sewing through all thickness, apply the zipper to the pocket. Press the pocket flat, then remove all basting stitches.

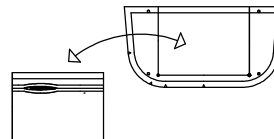


The pocket should look like this.

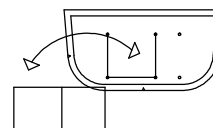
Press the side & bottom edges of the pocket under 5/8", and sew the pocket to one side of the pocket lining-see the pattern for the correct position.

5

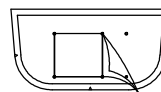
Make sure that you lay the upper unfinished edge of the pocket along the cut edge of the lining...this will mean that the upper edge of the pocket will be sealed into the lining/facing seam.



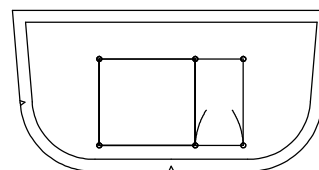
6a Prepare the lining cell & small pockets...turn the top edge of this pocket under 5/8" and stitch this hem down, then press the remaining 3 edges under 5/8".



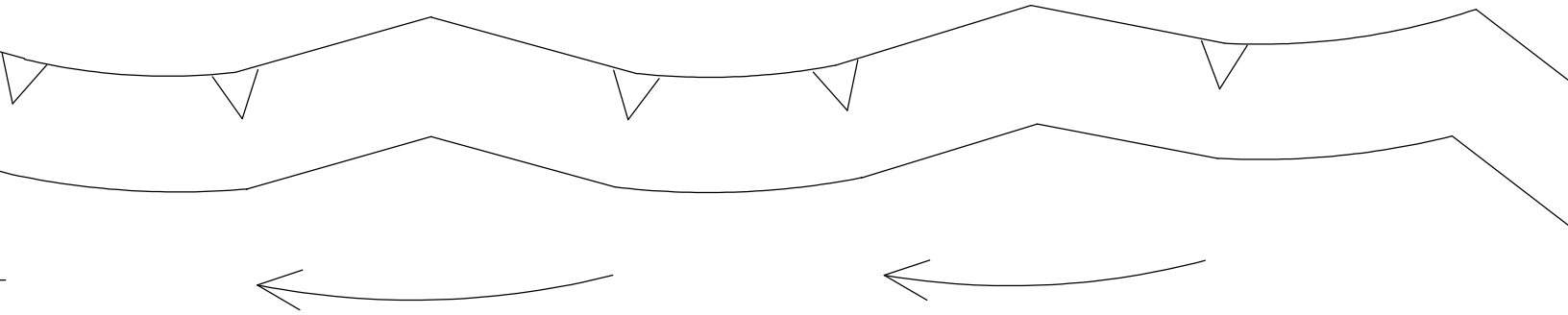
Apply the left side of the pocket to the remaining lining piece, following the stitch lines indicated on the pattern: you'll end up with an applied pocket, plus an unattached flap...it should look like this:



6b Following the notches on the remaining flap of the pocket, pleat the bottom edge of the pocket, then stitch the remaining bottom and side edges of the pocket onto the lining-voila! cell phone & small pocket!

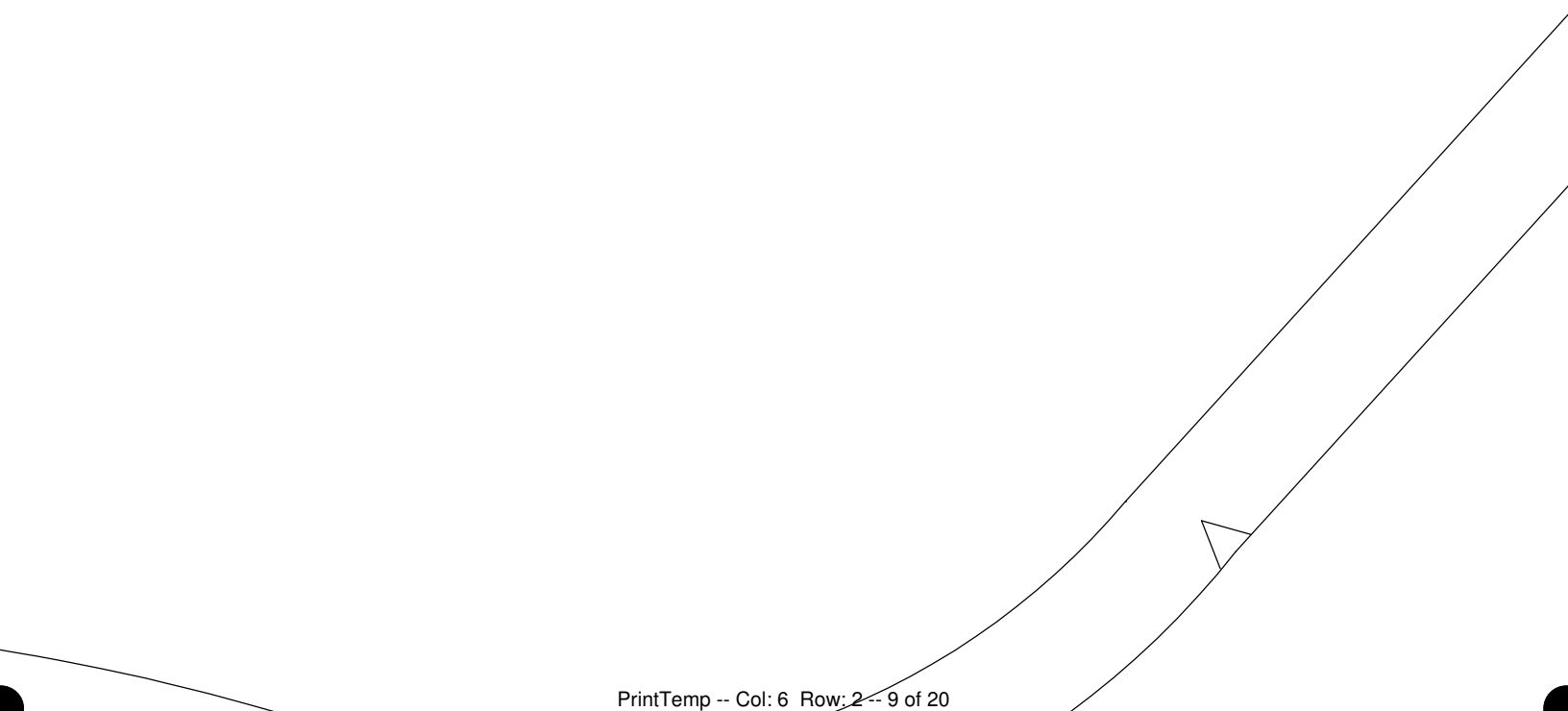


This is what it should look like.



ic.com

ad
er



sumatra mini-shopper
side facing

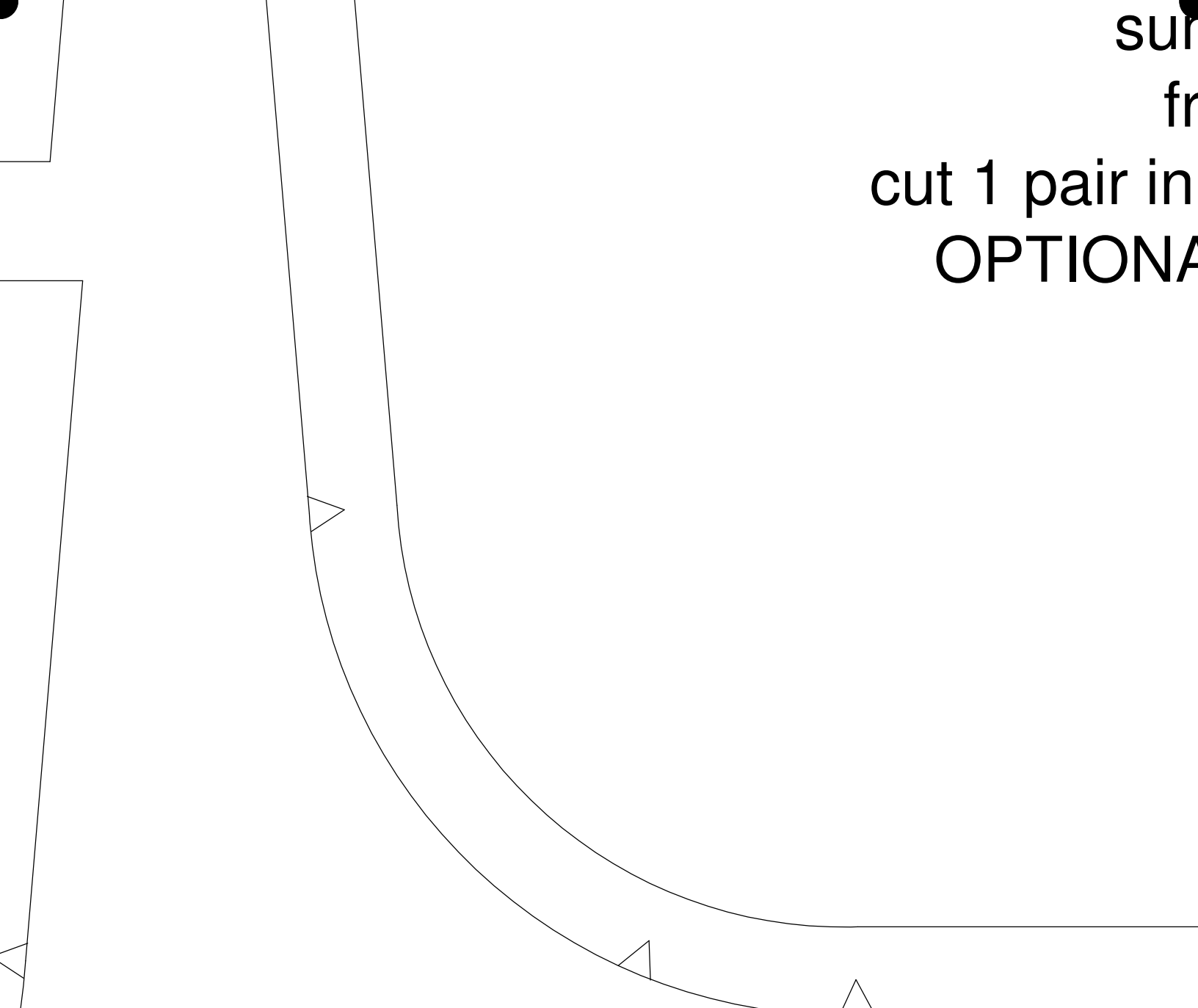
cut 1 pair in contrast fabric

OPTIONAL cut 1 pair in canvas or similar for mount

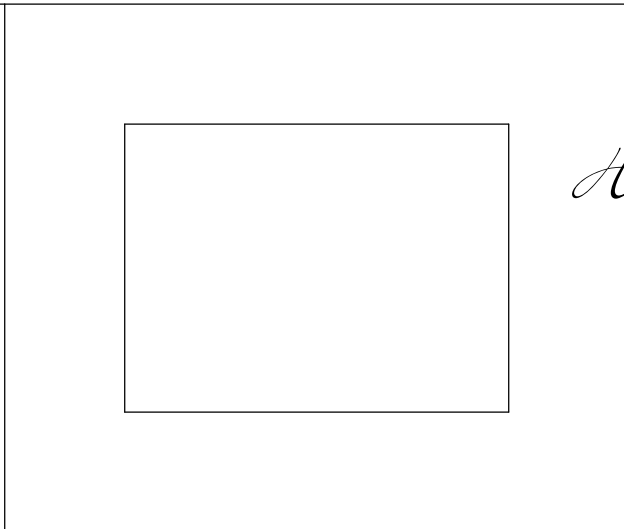
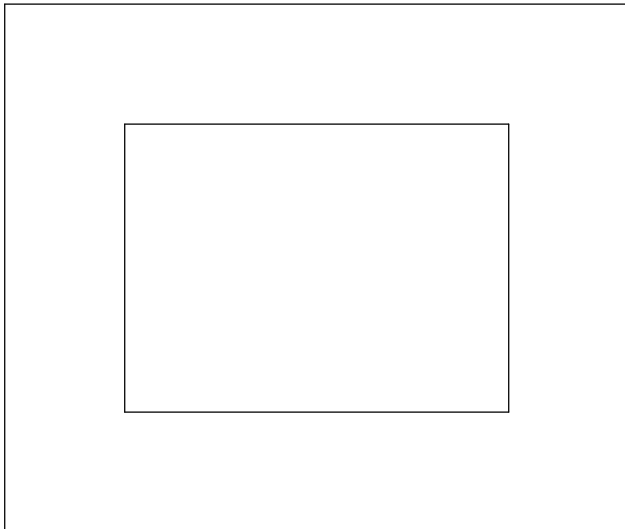
OPTIONAL cut 1 pair in interfacing

Hot Pat

excl



sum
fr
cut 1 pair in
OPTIONAL



Hot Patterns &

exclusive free
sumatra mini
ring loop
cut 1 pair in

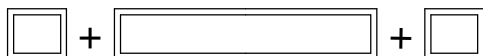
instructions page 3 of 4

7

Join the bottom edges of the side facings to the top edges of the side/bottom lining strip.

Please note...if you want to mount the side facings, refer to the method in step 11

Press the seams open.

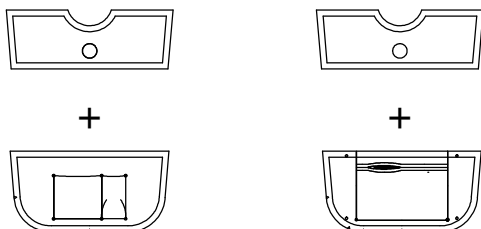


8

Join the bottom edges of the front & back facings to the top edges of the front & back linings.

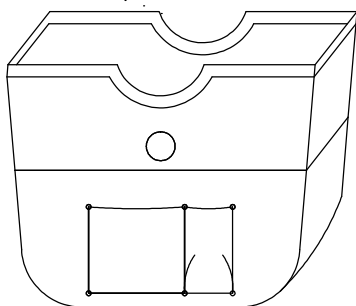
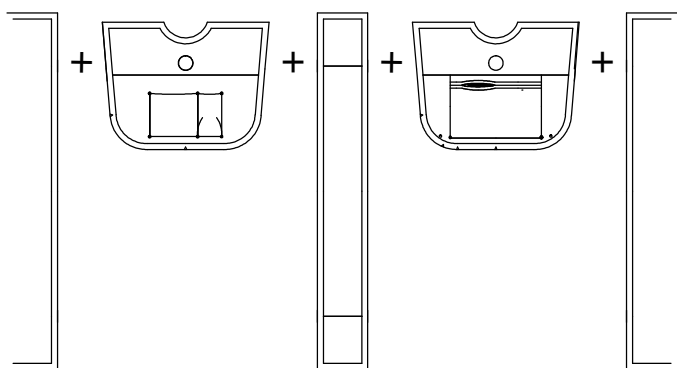
Please note...if you wish to mount the front & back facings, please refer to the method in step 11

Press the seams open.



Join the front lining/facing to one long edge of the side/bottom lining/facing strip, matching the notches and easing where necessary.

9 Repeat this with the back lining/facing -make sure that you leave a large opening along the bottom edge to turn the bag through. Press the seams open.



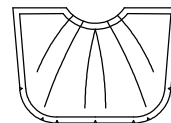
This is what your completed bag lining will look like...

Prepare the body of the bag: pleat the front & back pieces.

10 The pleats fold towards the center front/back.



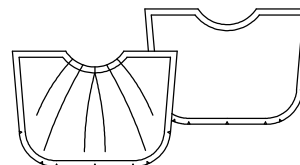
This is what your pleated front & back will look like.



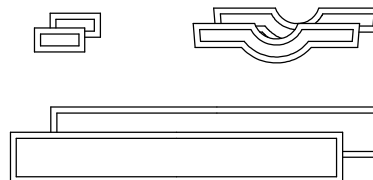
Mount the pleated front & back pieces onto the front & back mount...lay the pleated front & back right side up onto the mount pieces, right side up.

11

Baste them together around the outer edges, about 1/2" in from the cut edges.

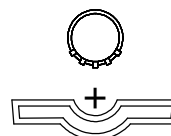


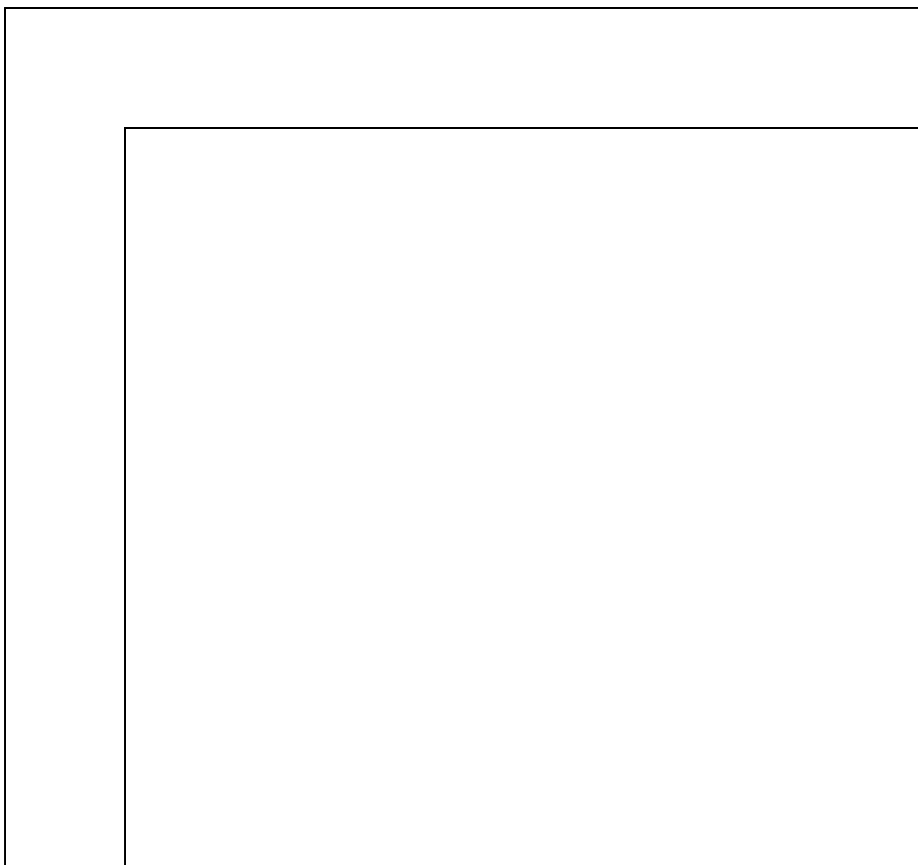
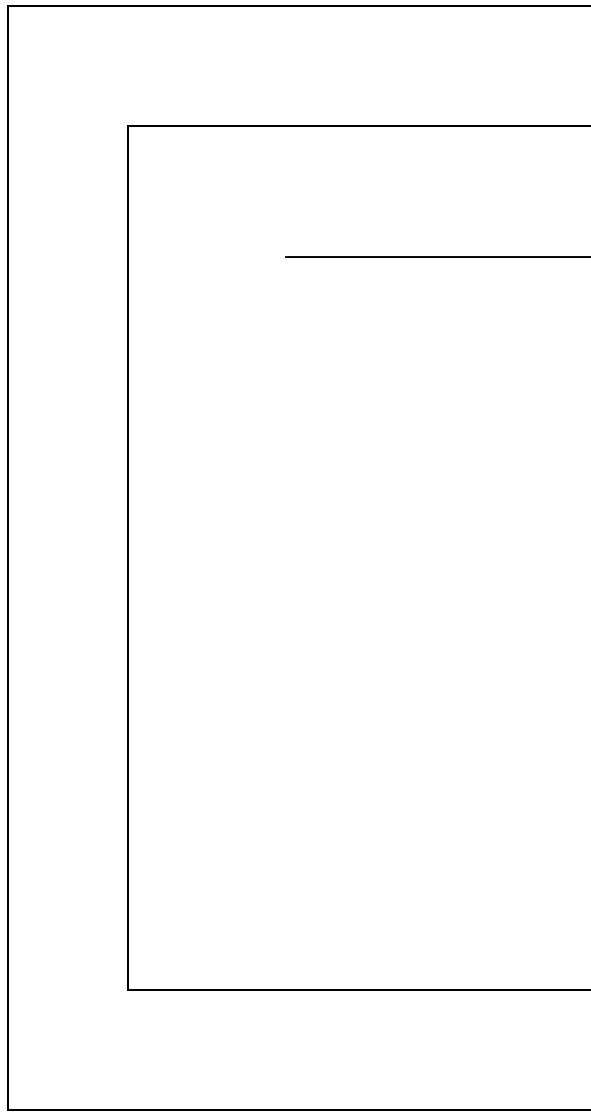
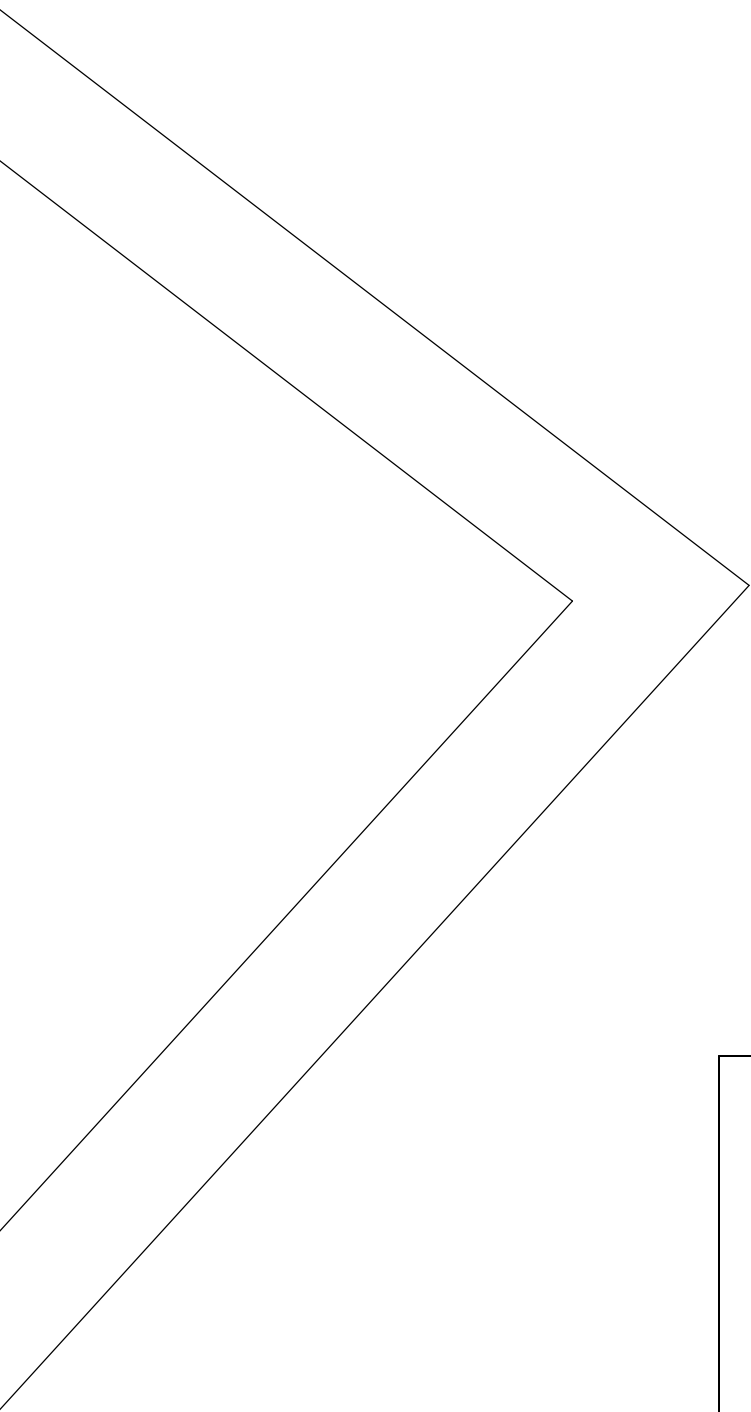
12 Repeat this with the side/bottom pieces and, if you wish, also mount the side and front & back contrast pieces.



Thread 5 loops over each of the circular handles.

13 Baste the loops/ring assembly to the top edge of the front & back contrast pieces





Hot Patterns & fabric.com

exclusive free download
sumatra mini-shopper
lower zipped pocket
cut 1 in lining

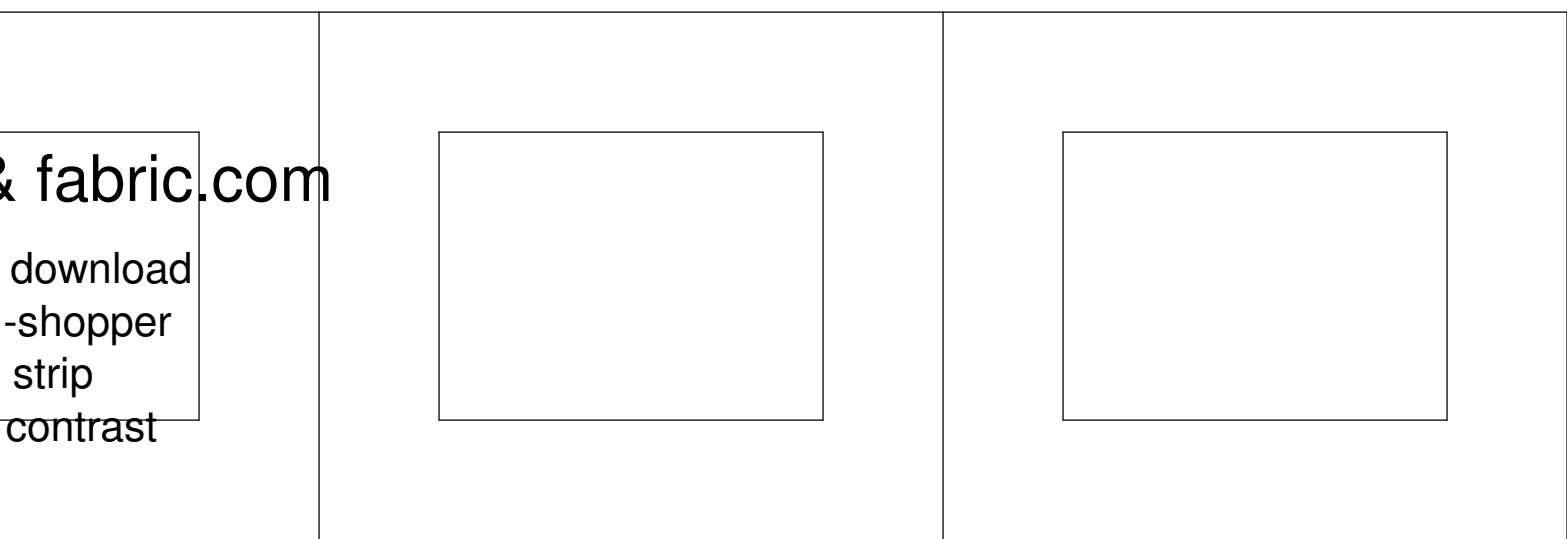
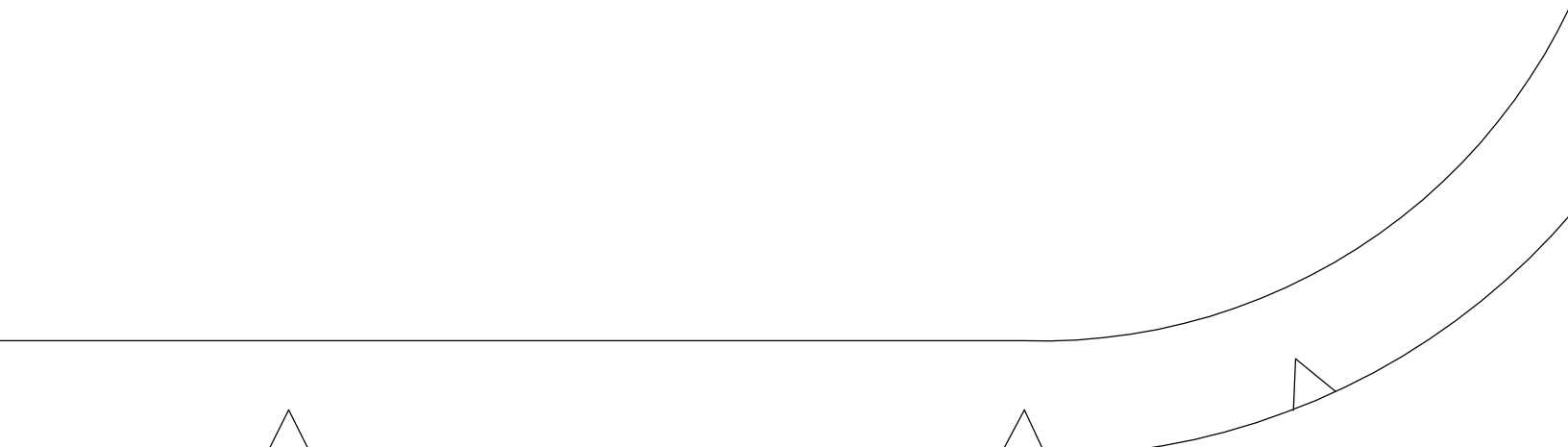
Hot Patterns & fabric.com

exclusive free download

Patterns & fabric.com

exclusive free download

matra mini-shopper
front & back mount
canvas or similar for mount
AL cut 1 pair in interfacing



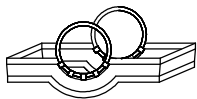
& fabric.com
download
-shopper
strip
contrast

instructions page 4 of 4

Join the side contrast pieces to the front & back contrast pieces to create a loop.

14

Yes, it's a strangely shaped loop, but a loop all the same!

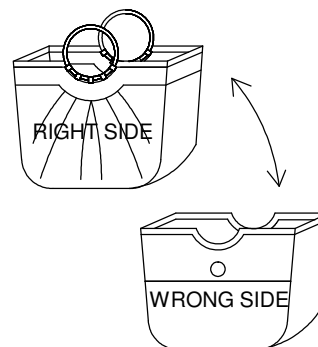


This is what the loop will look like.

To complete the bag...turn the lining inside-out, then drop the bag inside the lining, so right sides together.

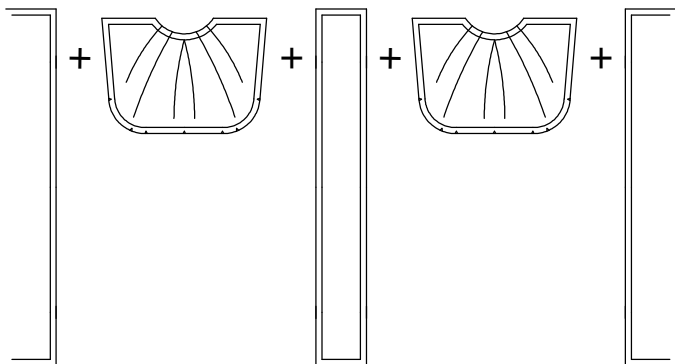
17

Make sure that you tuck the loop/ring assembly out of harms way!



15 Join the bag front to one long edge of the side/bottom strip, matching the notches and easing where necessary.

Repeat this with the bag back. Press the seams open.



Join the lining to the bag along the upper edges, making sure you match all the seamlines.

18

Press the seams open, clip the corners and turn out.

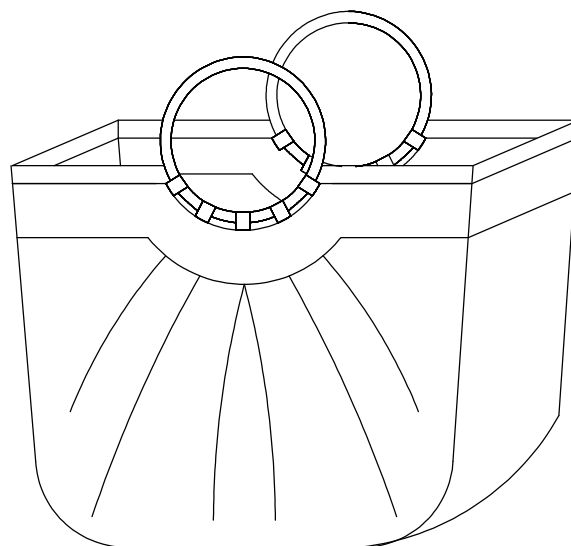
Close the opening in the lining by hand or machine.

16 Matching all seamlines, join the bottom edge of the contrast piece (that strangely shaped loop!) to the top edge of the bag...you've got 2 different ways to do this, see which one works best for you!

Method #1...join the contrast to the bag right sides to right sides, carefully pivoting your needle and clipping away the excess in the seam allowances at each corner.

OR

Method #2....trace off the contrast pattern pieces onto firm card. Trim off the bottom seam allowances ONLY, plus another 1/8"... so, 3/4" in total. Use this card as a guide to press the bottom seam allowances under, then lay the contrast pieces on top of the bag and topstitch the contrast into place.



You're done!

And what a F-A-B-U-L-O-U-S bag!

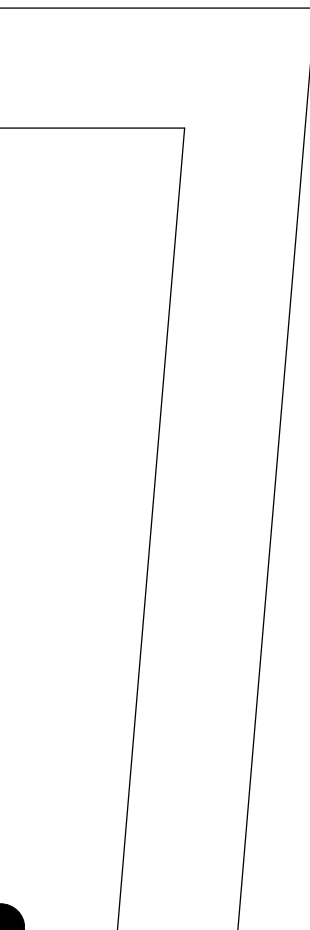
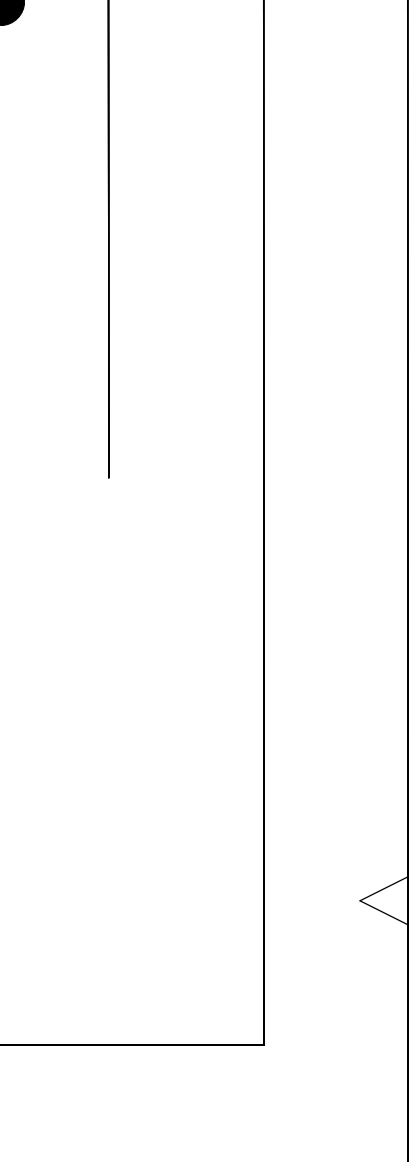
Now you just know you'll be making more of these, in all sorts of different prints, colors and textures...

stitch pocket to lining along this line

HotPatterns & fabric.com

exclusive free download
sumatra mini-shopper
small pocket/cell phone pocket
cut 1 in lining

trim off lining strip along this line



oric.com

ad

**ilar for mount
acing**



Hot Patterns & fabrics

exclusive free download

sumatra mini-shoppe

sides & bottom

cut 1 in fabric

cut 1 in lining

OPTIONAL cut 1 in canvas or sim

OPTIONAL cut 1 in interf

Hot Patterns & fabric.com
exclusive free download
sumatra mini-shopper
upper zipped pocket
cut 1 in lining

trim off lining strip along this line

Hot Patterns & fabric.com

exclusive free download
sumatra mini-shopper
side contrast

cut 1 pair in contrast fabric

OPTIONAL cut 1 pair in canvas or similar for mount

OPTIONAL cut 1 pair in interfacing