

SKILL LEVEL

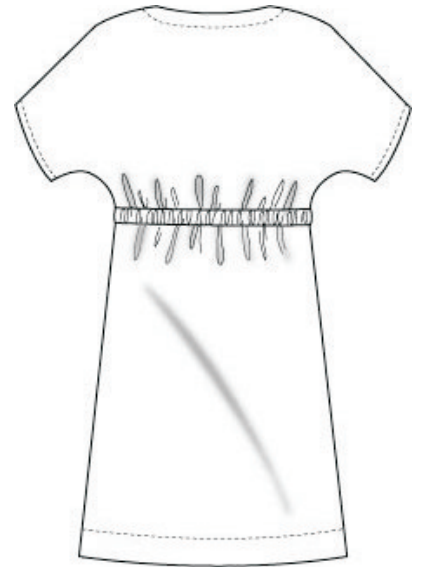
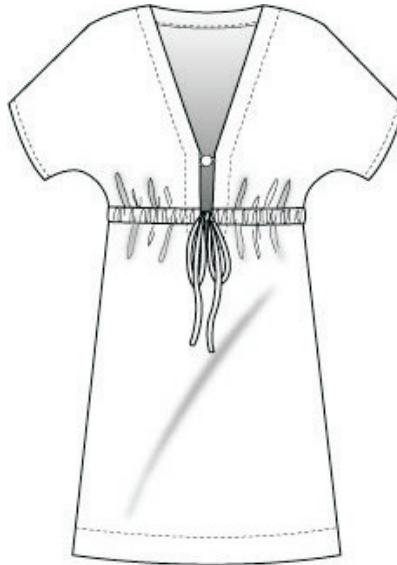
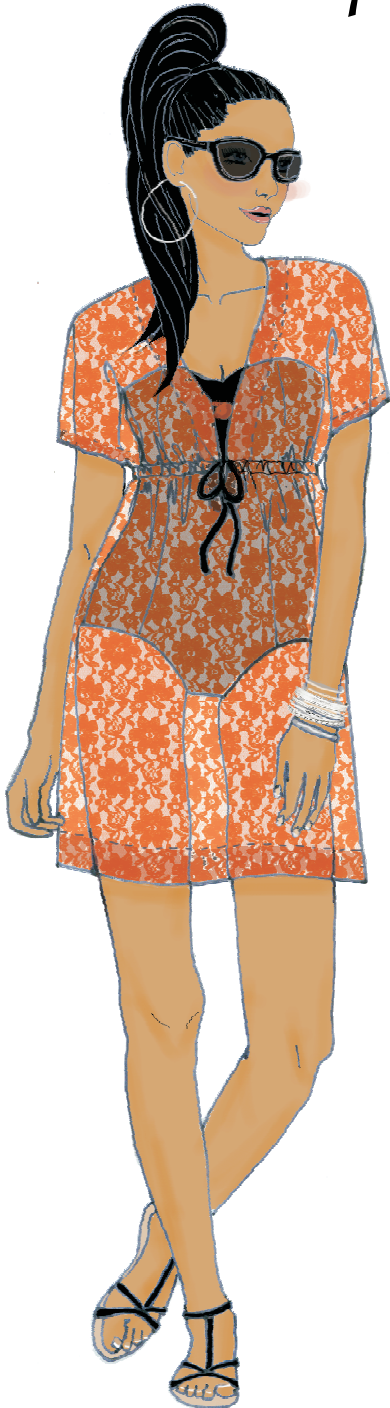


BEGINNER

multisized
pattern...sizes
6/8/10/12/14/16
/18/20/22/24/26
all together!

*www.hotpatterns.com*tm
patterns so hot they're smokin'...

HotPatterns & fabric.com exclusive download
Peachy Beachy Pool-Side Cover-Up



Summer-time fabulousness and pool-side glamour with this chic and simple cover-up, perfect for drapey or semi-sheer fabrics like cotton lace, handkerchief linen, rayon or voile, but also great in light weight T-shirtings or a snuggly-soft terry toweling. Pull-over, semi-fitted cover-up has a low V-neck with button closure, short dolman sleeves, a drawstring under the bust, and finishes at mid thigh. Wear this vacation essential over your swimsuit or bikini when the sun is just *too much*...lounging poolside, relaxing at the beach or chilling out at the bar.

Hot Patterns & fabric.com

exclusive free download peachy beachy pool-side cover-up instructions page 1 of 2

SEAM ALLOWANCES & OTHER INFO

Seam allowances are 5/8" or 1.5 cm wide; all seams are sewn right sides together unless otherwise stated.

The neckline has a stitched-down facing; the sleeve edges have a 5/8" or 1.5cm deep hem and the bottom edge has a 1 1/2" or 3.5 cm deep stitched hem.

Skills needed include: making & applying a neck facing; making & applying an elastic waist casing; making & applying a button & loop; working a hem..

ABOUT THIS STYLE

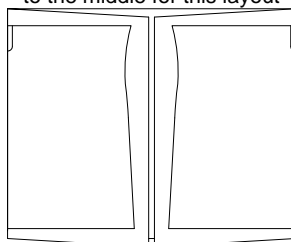
The Cover-up has an semi-fitted, slightly relaxed silhouette, with an underbust drawstring for shaping.

We haven't included a pattern for the button loop... you just need to cut a 3" or 7.5 cm long bias strip of 1 1/2" or 3.75 cm wide fabric.

Oh yes, as always, make & fit a muslin before you cut into your fabric...in this case, use a cheap fabric with a similar drape to your chosen fabric.

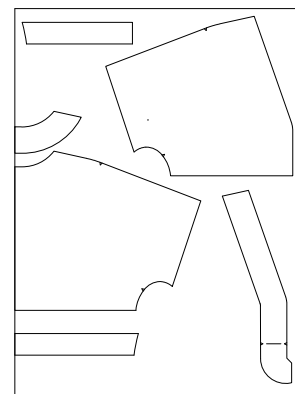
SUGGESTED CUTTING LAYOUT FOR THE LOWER FRONT & BACK COVER-UP

fold fabric in half, with selvages to the middle for this layout



SUGGESTED CUTTING LAYOUT FOR THE REMAINING COVER-UP PIECES

fold fabric in half, with selvage to selvage for this layout



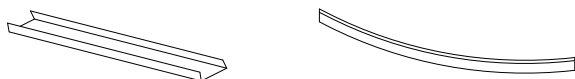
FABRIC & NOTIONS REQUIRED

You'll need around 2 1/4 yards/ 205 cm of 60"/150cm wide fabric for the cover-up. You'll also need enough 1" or 2.5 cm wide ribbon to circle under your bust twice, plus 1 x 3/4" or 2cm button.

1 Start by preparing the bias for the button loop.

Feed your bias strip through a bias binding folder, pressing as you go. fold in half lengthways, then topstitch the long ends together.

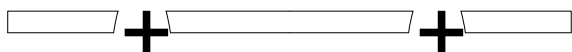
Set aside until step 6.



2 Join the front waist casings to the back waist casing along the side seams, and press the seams open.

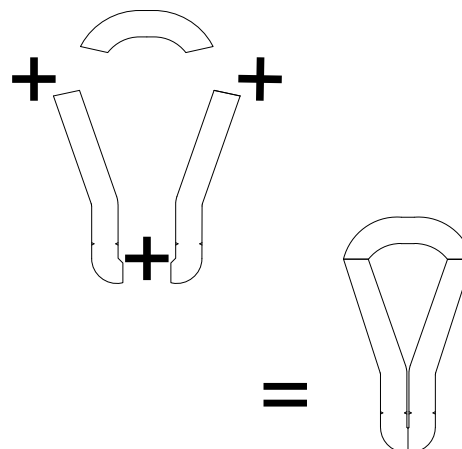
Press and stitch the short ends under 5/8" or 1.5cm.

Set aside until step 5a.



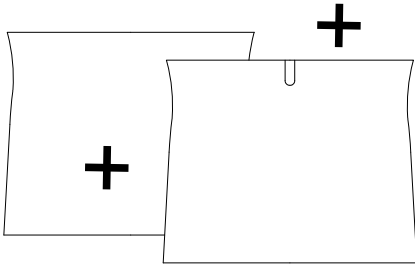
Join the front facings together at the center front seam, then join the front facing to the back facing along the shoulder seams, and press the seams open.

3

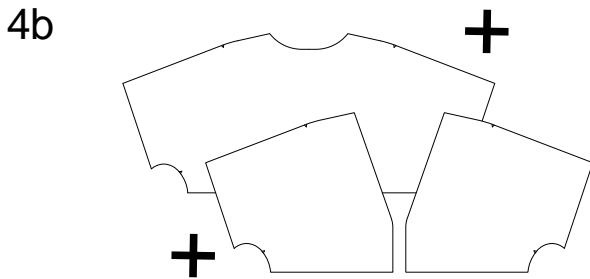


instructions page 2 of 2

4a Join the lower front to the lower back along the side seams, and press the seams open.

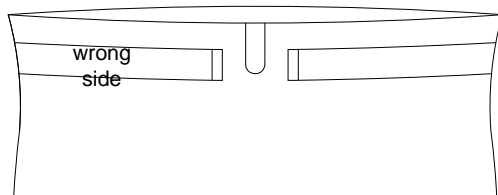
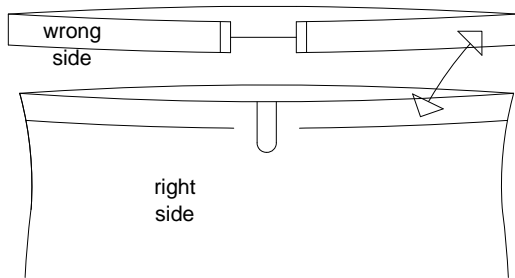


Join the upper fronts to the upper back along the shoulder and side seams, and press the seams open.



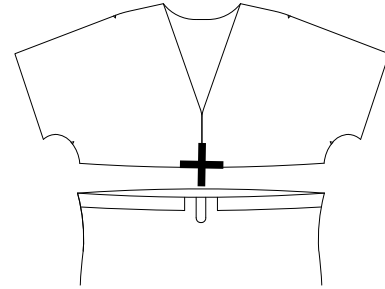
Following the stitchline marked on the pattern, stitch the bottom edge of the casing to the lower front & back. Press this casing upwards... the raw edge of the casing should align with the raw edge of the lower back & front.

5a Baste or pin the upper edges of the casing and the lower front & back together.



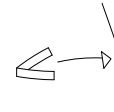
Matching the side seams and the center fronts & backs, join the upper fronts & back to the lower front & back...you'll sandwich the casing edge in as you go. Press the seam allowances downwards.

5b



Baste or pin the bias button loop into place (you'll see the correct position on the pattern)...you'll seal this in when you attach the facing.

6

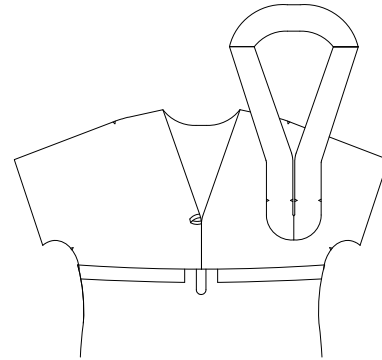


7

Matching the shoulder seams and the center fronts & backs, join the neckline facing to the cover-up.

When you reach the lower front area, you'll follow the stitchline as marked on the pattern.

Clip the seam allowances, press the seams open and turn the facing inside the cover-up. Topstitch the facing down, starting and finishing at the center back.

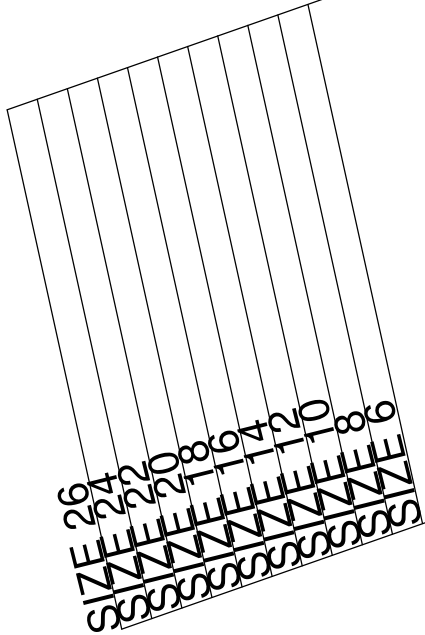


8

Hem the sleeves with a 5/8" or 1.5cm turning; hem the bottom with a 1 1/2" or 3.75cm turning.

Complete the cover-up by attaching a button to correspond with the button loop, and threading your drawstring through the casing... do this by pinning a safety pin through the drawstring and threading it in one opening, along the casing and out the other opening.

Voila! Total summer-time gorgeousness!



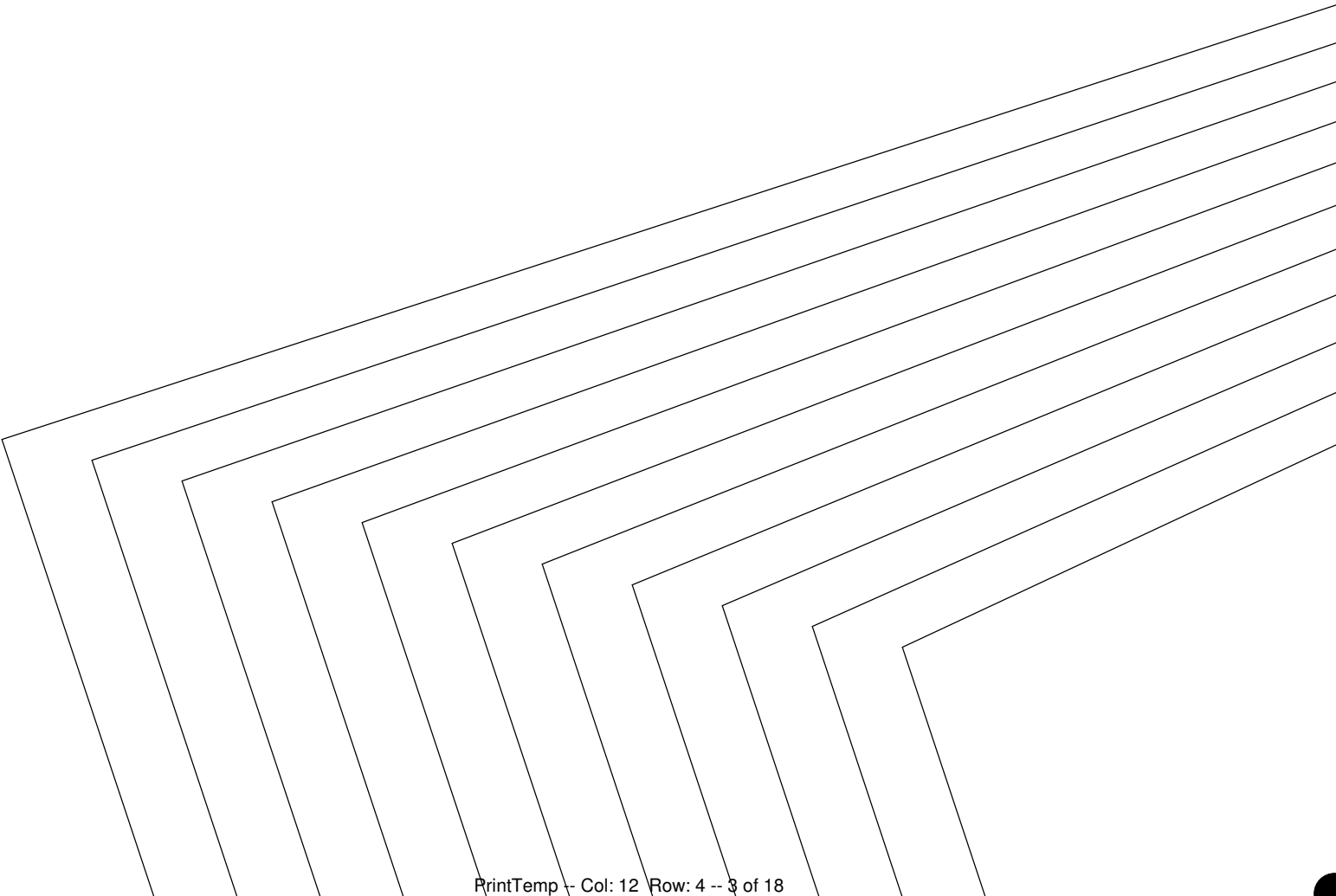
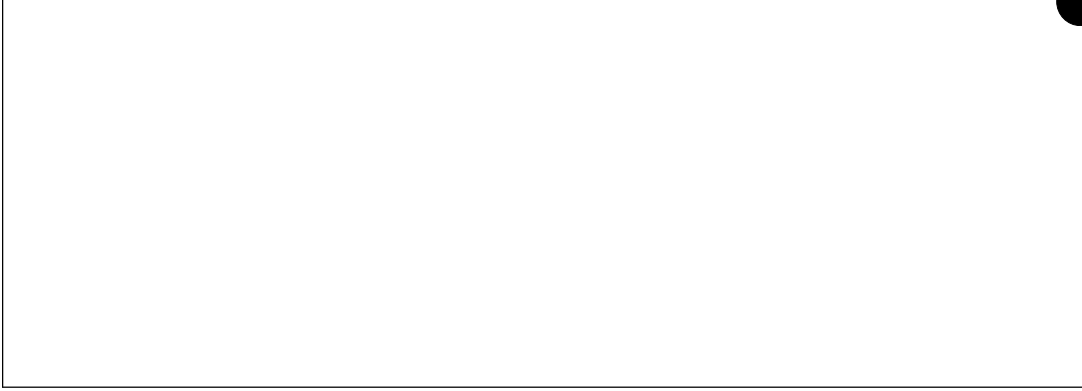
SIZE 26
SIZE 24
SIZE 22
SIZE 20
SIZE 18
SIZE 16
SIZE 14
SIZE 12
SIZE 10
SIZE 8
SIZE 6

SIZE 26
SIZE 24
SIZE 22
SIZE 20
SIZE 18
SIZE 16
SIZE 14
SIZE 12
SIZE 10
SIZE 8
SIZE 6

Hot Patterns & fa

exclusive free dow
peachy beachy pool-si
upper back
cut 1 on fold in f

FOLD



SIZE 26
SIZE 24
SIZE 22
SIZE 20
SIZE 18
SIZE 16
SIZE 14
SIZE 12
SIZE 10
SIZE 8
SIZE 6

SIZE 26
SIZE 24
SIZE 22
SIZE 20

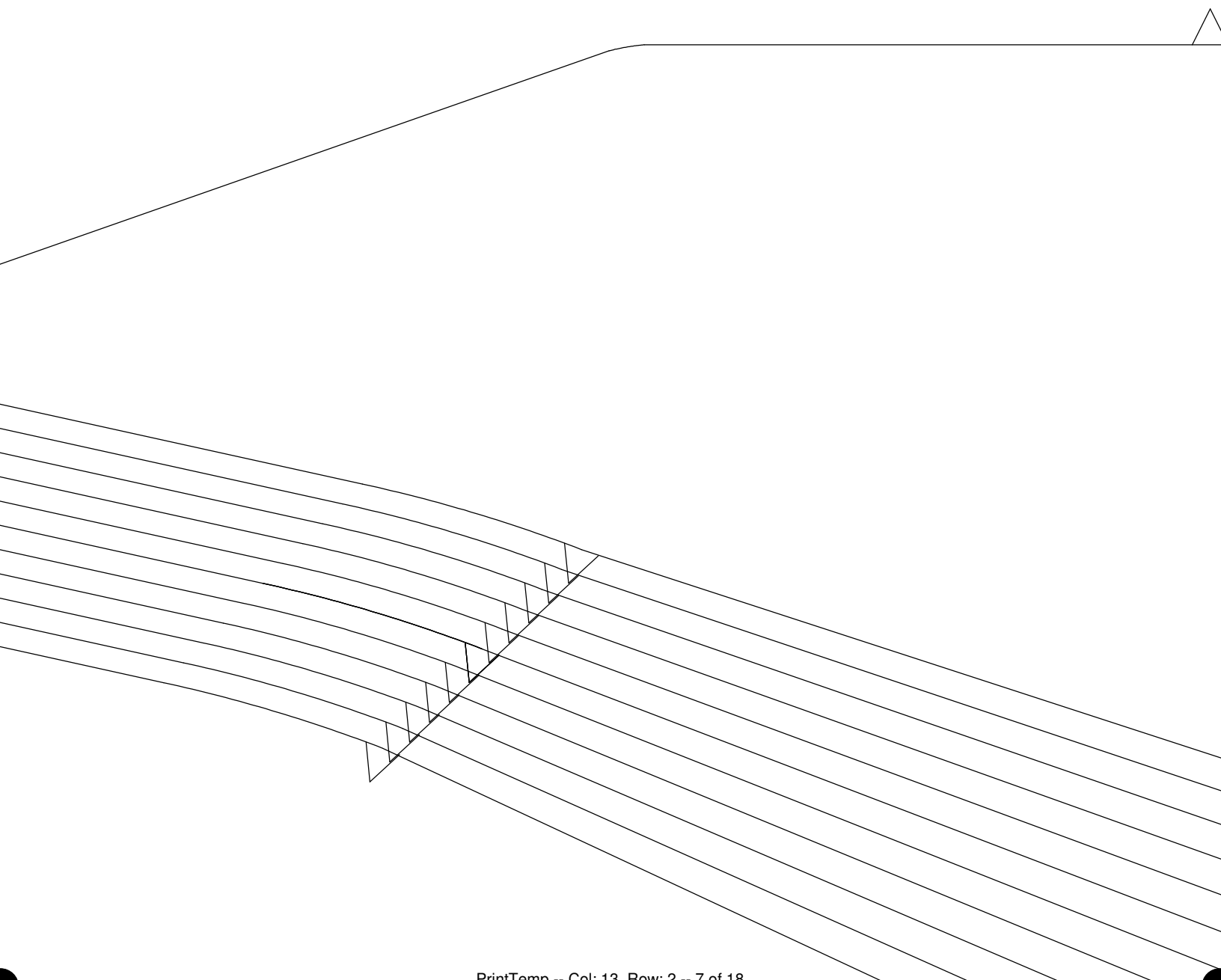
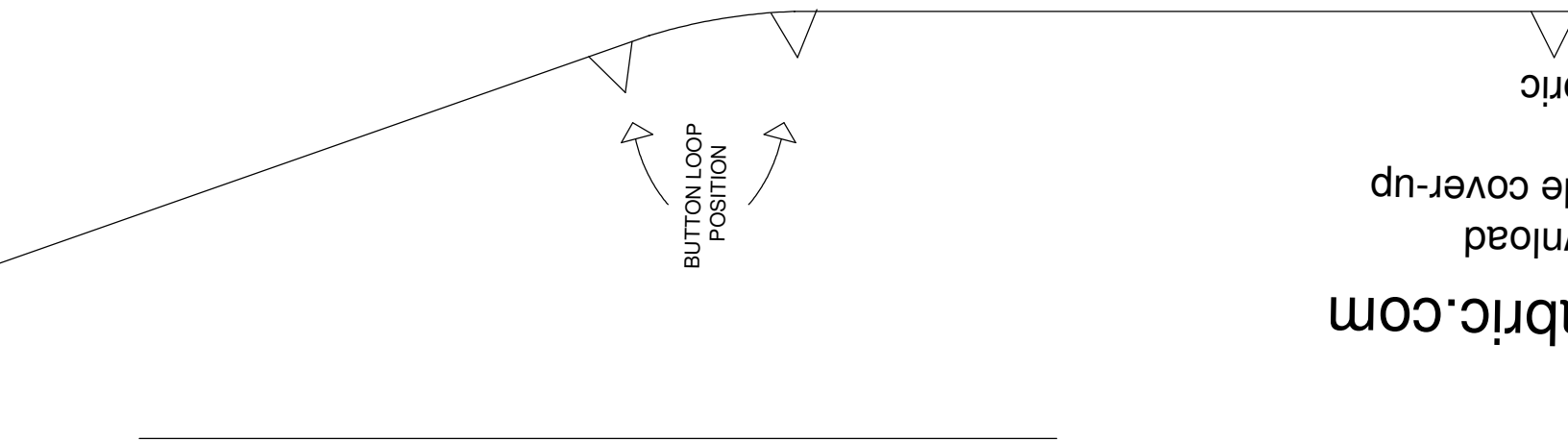


SIZE 26
SIZE 24
SIZE 22
SIZE 20
SIZE 18
SIZE 16
SIZE 14
SIZE 12
SIZE 10
SIZE 8
SIZE 6

FOLD

HotPatterns & fabric.com

exclusive free download
peachy beachy pool-side cover-up
back drawstring casing
cut 1 on fold in fabric



fabric.com

ownload

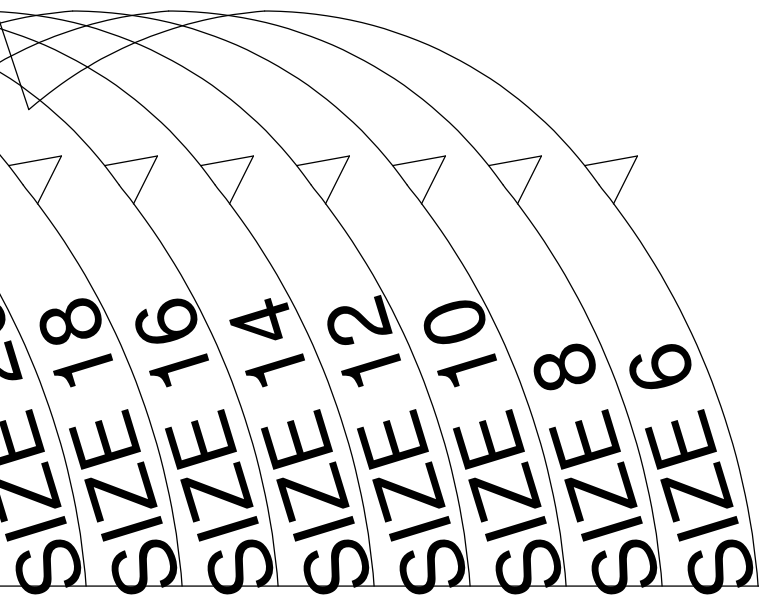
de cover-up

abric

SIZE 6
SIZE 8
SIZE 10
SIZE 12
SIZE 14
SIZE 16
SIZE 18
SIZE 20
SIZE 22

SIZE 26
SIZE 24
SIZE 22
SIZE 20
SIZE 18
SIZE 16
SIZE 14
SIZE 12
SIZE 10
SIZE 8
SIZE 6

exclusive free download
peachy beachy pool-side
upper front
cut 1 pair in fabric



SIZE 26
SIZE 24

- SIZE 22
- SIZE 20
- SIZE 18
- SIZE 16
- SIZE 14
- SIZE 12
- SIZE 10
- SIZE 8
- SIZE 6

Hot Patterns & fabric

exclusive free download
peachy beachy pool-side cover
lower front & back
cut 1 pair on fold in fabric

FOLD

dn-je
woc.

HotPatterns & fabric.com

exclusive free download
eachy beachy pool-side cover-up
front drawstring casing
cut 1 pair in fabric

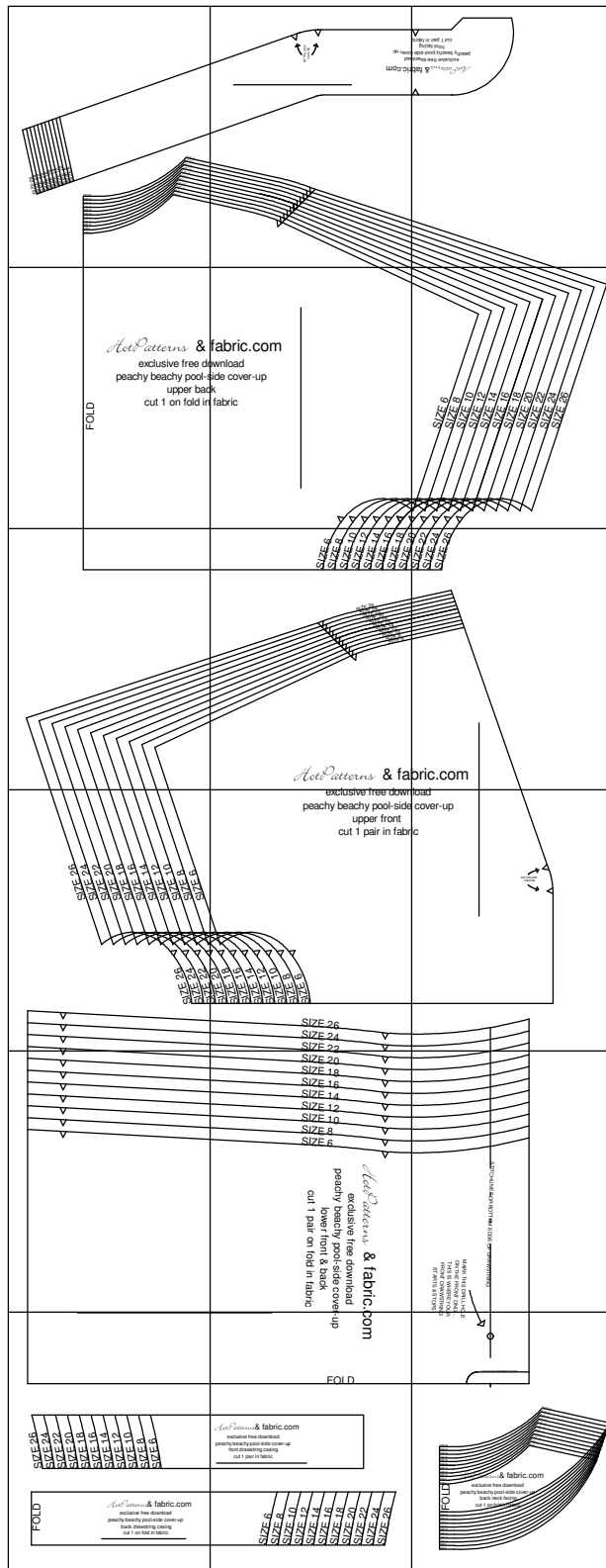
SIZE 6
SIZE 8
SIZE 10
SIZE 12
SIZE 14
SIZE 16
SIZE 18
SIZE 20
SIZE 22
SIZE 24
SIZE 26

SIZE 26
SIZE 24
SIZE 22
SIZE 20
SIZE 18
SIZE 16
SIZE 14
SIZE 12
SIZE 10
SIZE 8
SIZE 6

FOLD

SIZE 26
SIZE 24
SIZE 22
SIZE 20
SIZE 18
SIZE 16
SIZE 14
SIZE 12
SIZE 10
SIZE 8
SIZE 6

Hot Patterns & fabric.com
 exclusive free download
 peachy beachy pool-side
 front facing
 cut 1 pair in fabric



SIZE 6

SIZE 8

SIZE 10

SIZE 12

SIZE 14

SIZE 16

SIZE 18

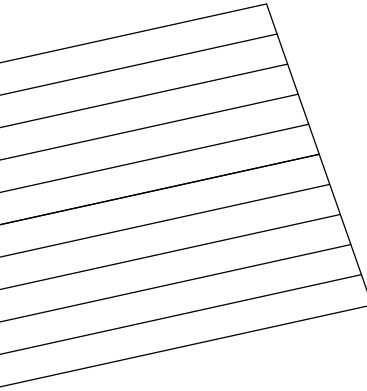
SIZE 20

SIZE 22

SIZE 24

SIZE 26

SIZE 22
SIZE 24
SIZE 26



oad
cover-up

e

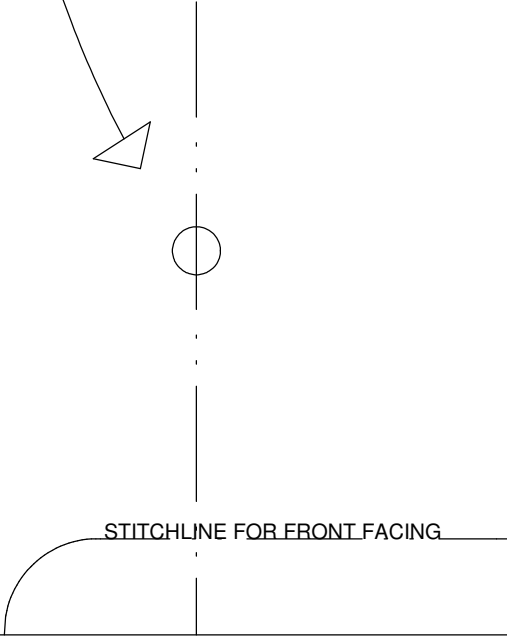
BUTTON LOOP
POSITION



STITCHLINE FOR BOTTOM EDGE OF DRAWSTRING

MARK THIS DRILL
ON THE FRONT OF
THIS IS WHERE Y
FRONT DRAWSTF
STARTS & STO

PS
RING
OUR
ONLY...
HOLE



- SIZE 26
- SIZE 24
- SIZE 22
- SIZE 20
- SIZE 18
- SIZE 16
- SIZE 14
- SIZE 12
- SIZE 10
- SIZE 8
- SIZE 6

Hot Patterns & fabric.com

exclusive free download
peachy beachy pool-side cover-up
back neck facing
cut 1 on fold in fabric